

Fall 2022 Supply Catalog

**Albright's
Supply**

**HOME OF
FREE SHIPPING**

www.albrightssupply.com



662.287.1451



662.872.9334



662.287.1452



sales@albrightssupply.com

2102 South Tate Street
Corinth, Mississippi 38834

SHIPPING POLICY

FREE SHIPPING

ON ORDERS OF \$150 OR MORE!

Please take advantage of our **FREE GROUND SHIPPING** on orders totaling \$150 or above within the **48 continental United States** (excludes Weldwood 5 Gallon buckets and special order items). Albright's Supply believes that shipping costs should not be a burden for our customers. We are always looking for ways to improve service and communication to our customers. We have listed the service maps for UPS and FedEx Ground on the next page.

Most orders placed before 4:00 p.m. CST are shipped the same day. By looking at the maps and following the guidelines on the maps, you can estimate the expected date of delivery for your order. Please note that these transit times are based on a business week schedule, i.e. Monday-Friday. If you need it sooner, please call or email for detailed information and additional charges. Providing us with an email address will get you an informative tracking number so that you can go to the respective websites to view their transit times and policies.

Delivery times cannot always be guaranteed due to outside forces during its transit. If the shipping carrier delays your order due to the following, we (and the shipping carrier) are not responsible: *Acts of God, weather conditions, environmental or dangerous goods incidents, perils of the air, public enemies, public authorities acting with actual or apparent authority, application of security regulations imposed by the government or otherwise applicable to the shipment, acts or omissions of customs officials, authority of law, quarantine, riots, strikes, work stoppages or slowdowns, or other labor disputes or disturbances, civil commotions or hazards incident to a state of war, local or national disruptions in ground or air transportation networks or systems due to events beyond the shipping carrier's control, disruption or failure of communication and information systems, disruption or failure of utilities, or any circumstances beyond the shipping carrier's control. We are not responsible for delays due to "mis-sort" errors by the carriers.*

Once a package has left our facilities, it is the responsibility of the shipping carrier as they are a separate business from our own.

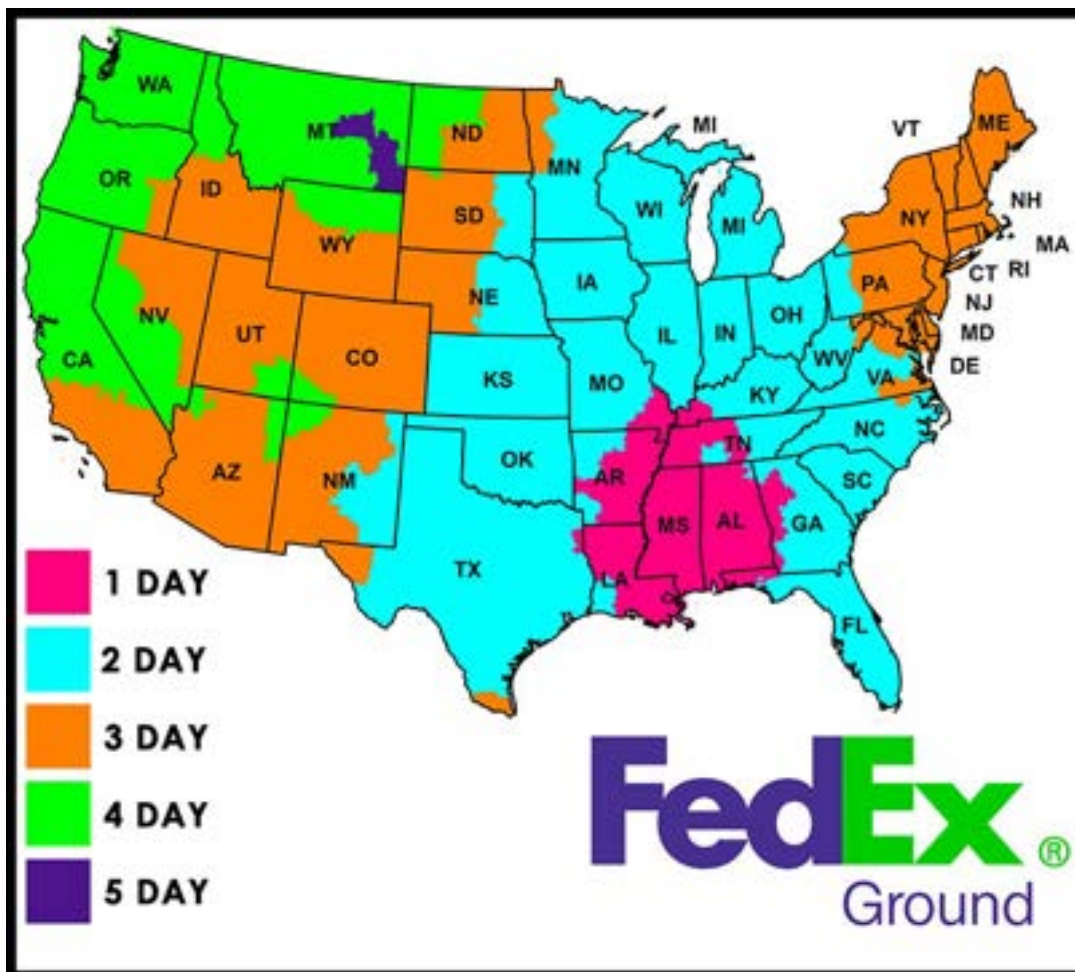
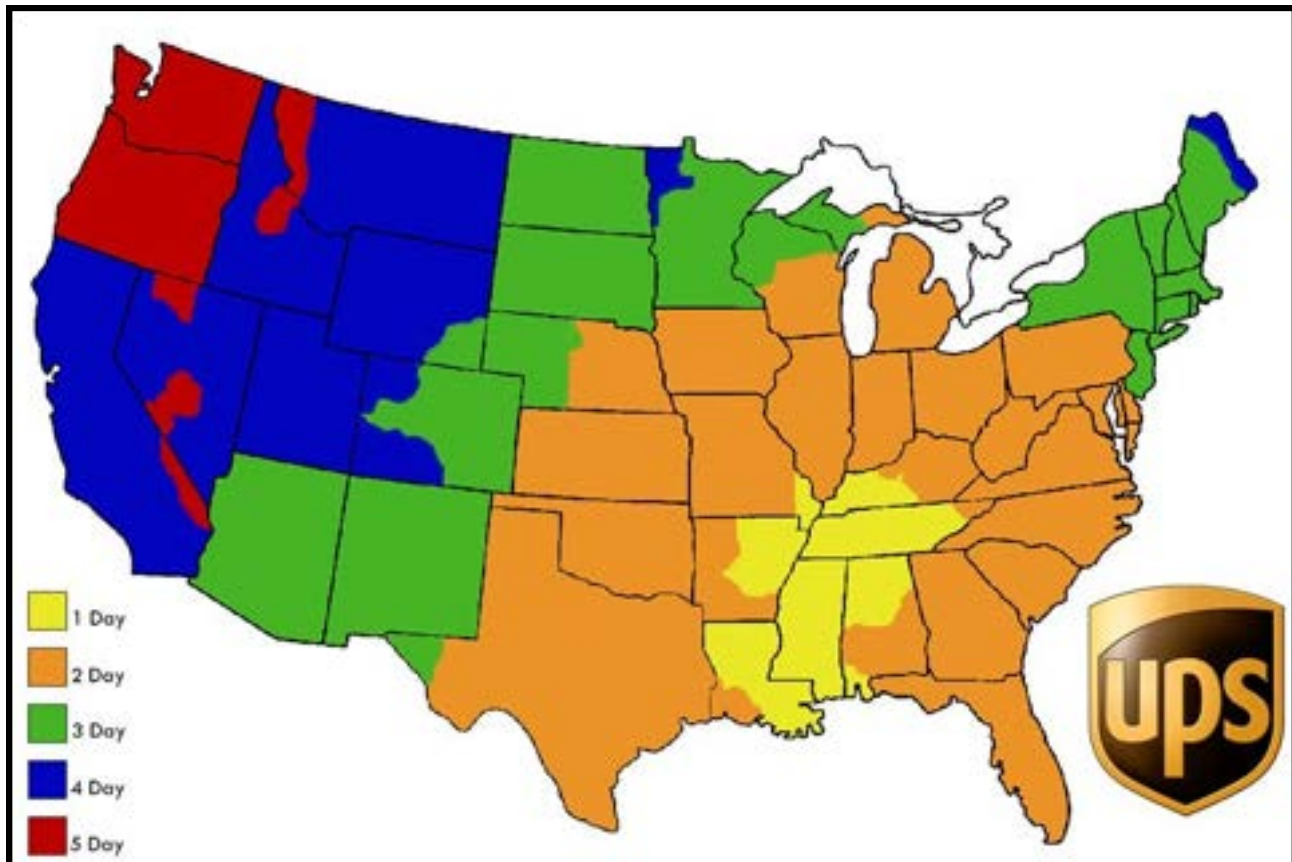
To find your tracking number, login to your account online. If you do not have an email, please feel free to call or text us the following morning for a tracking number.

To track your package, visit **www.ups.com** or **www.fedex.com** and enter your tracking number in the appropriate field.

You can also call UPS at **1(800) 742-5877** or FedEx at **1(800) 463-3339** and follow the prompts.

We highly recommend signing up for **UPS MyChoice** and **FedEx Delivery Manager** to better manage your deliveries.

TIME-IN-TRANSIT MAPS



RETURNS & INSPECTIONS

Returns

- You must contact us first for consent and RMA form. Returns without an RMA form will not be accepted
- A **20% restocking fee** will be charged for all returns
- All returns must be within **30 calendar days** of the delivery date
- Customer is responsible for return shipping charges and shipping arrangements
- We recommend using a shipping method that is trackable. We are not responsible for any damage or loss incurred during the return shipping.
- Any signs of wear, damage, or partial use will cause the refund to be denied
- Materials **cannot** be folded into a box. They must be returned in the same manner as received
- Cut yardage 3 yards and under will not be accepted as a return
- Special orders, foam, marine carpet, any backed folded carpet, or sale items will not be accepted as a return
- All returns, refunds, and exchanges are at the sole discretion of Albright's Supply

Return Instructions

To return an item, please email customer service at sales@albrightssupply.com to receive a Return Merchandise Authorization (RMA) form.

Refunds

After receiving your return and upon inspection, we will process your refund or credit. Please allow at least five(5) business days from the receipt of your item to process your return. Refunds typically take 3-10 days to appear in your bank account or credit card account. Times vary from different financial institutions.

Damaged Packages

Upon delivery of your order, immediately inspect your package for damage. If the outer packaging is damaged in any way, please take photos before opening the package. After taking photos, you may open the package to inspect the order. If the order was damaged, please submit the photos of the packaging as well as photos of the damaged products to us via email or text message and give us a call to let us know what happened so we can replace any goods that may need replacing.

Non-Damaged Packages

If your package was not damaged, please proceed with opening your package and inspecting your order.

1. Ensure that you received your entire order.
2. Inspect all goods to ensure you received the correct amount, color, and that nothing is flawed or damaged.

If something is missing from your package, please call us so we can send out the missing products if necessary. If something is damaged, please take photos and submit them via text message or email with your order details and a description of damage.

If you received an incorrect material or color, please take photos of the material next to the sample you were using to order with and submit them via text message or email. We will inspect our inventory here and provide solutions where necessary. *Please note, if you were not using a physical sample to order by and were instead matching off of the pictures on the website, this may cause color discrepancies. We highly recommend ordering samples before purchasing your materials.*

Compressed or Folded Goods

Due to the nature of our shipping policy, it is necessary to vacuum, compress, or fold certain materials to offer you the best deal on shipping. These items must be opened and unfolded immediately upon delivery in order for the product to return to a usable state.

- All sew foam, cotton, and cushion wrap must be opened and allowed 24 hours to fully decompress.
- All polyfoam must be unrolled immediately and allowed 24 hours to fully decompress.
- All carpets and flooring must be unrolled and unfolded immediately to prevent damages and irreversible wrinkling.

OEM

WWW.AUTOORIGINALS.COM

Now it's **easy** to find and buy OEM material.

Search By **One or More** Criteria:

Tip: We recommend searching by **Year, Make, & Model** or searching by **Year, Make, & Material Type**.

Year

Make

Model

Pattern

Material

Part Number

Search

Note: The **Buy Now** link will appear when items are in stock

The First Online Auto Interior OEM Database

- If it's in the Detroit books, you'll find it here.
- Searchable by year, make, model, and more.
- Starts at the year 2000 and goes to the current year.

In addition to our OEM Database, we also offer our expert advice in matching up materials. Just **text or email us** a picture with the **year, make, and model** of the vehicle.

INDEX

A

Adhesive 22
 Airlay 3
 Automotive 55-63
 Auveco Clips & Fasteners 35-47
 Awls 51

B

Batting..... 3
 Binding, Canvas 64
 Binding, Carpet 56
 Binding, Convertible..... 55
 Binding, OET Bias 56
 Boards, Chip 12
 Boards, Panel..... 12
 Boat Trailer Runner..... 68
 Brun Tuff 64
 Buckles, Side Release..... 8
 Buckles, Step Lock 8
 Bungee 9
 Burlap 4
 Button Cutters..... 29
 Button Dies & Cutters 29
 Button Machine 29
 Button Shells 28
 Buttons 28-29
 Buttons, Prong 28
 Buttons, Tack Nail..... 28
 Buttons, Wire Eye..... 28

C

Canvas 63
 Carpet, Aqua Turf 65
 Carpet, Automotive 57-59
 Carpet, Berber 68
 Carpet, Catalina 66
 Carpet, Cutpile..... 57
 Carpet, Loop..... 57
 Carpet, Marine 65-68
 Carpet, Mystic 66
 Carpet, Stretch 59
 Celestra Cloth 4
 Chalk, Prang..... 10
 Chalk, Tailors..... 10
 Clips, Border Wire 6
 Clips, EK 6
 Clips, G 6
 Clips, J-Style 13
 Clips, RJ 6
 Clips, Rubber Webbing 8
 Clips, Seat 13
 Clips, Three Prong..... 6
 Cloth, Automotive..... 61
 Contract..... 71
 Convertible Supplies 55
 Cotton 3
 Crinoline 7
 Cushion Wrap 3

D

Dacron..... 3
 Decking 4
 Denim 4
 Durasnaps 31
 Dust Cloth 4

E

Edge Roll 7
 Elastic 9
 EZ Film 3

F

Fasteners 31-36
 Fasteners, Baby Snaps 31
 Fasteners, Common Sense 33
 Fasteners, Hook & Loop 11
 Fasteners, Lift the Dot 34
 Fasteners, One Way Pull..... 33
 Fasteners, Snaps 31
 Flex Trim 16
 Flex-o-lators..... 5
 Foam Cutter 52
 Foam 1
 Foam, Bolsters 2
 Foam, Closed Cell..... 3
 Foam, Rolled 2
 Foam, Sew 2
 Foam, Slabs 2

G

Gel Pad 6
 Glue 22
 Grommet Dies 27
 Grommet Hole Cutter..... 27
 Grommet Kits..... 27
 Grommets 27

H

Hammer, Tack..... 51
 Headliner Tools..... 54
 Headliner, Automotive 60
 Headliner, Camo 60
 Headliner, Suede 60
 Headliner, Vinyl..... 60
 Healthcare..... 71
 Heel Pads 56
 Hidem, Automotive..... 26
 Hidem, Marine..... 26
 Hog Rings 13
 Hook & Loop Sticks..... 11
 Hooks, Shock Cord 9
 Hooks, Snap 9
 Hospitality..... 71

J

Jute Pad..... 56

L

Landau Pad 3
 Landau Top Material 56
 Leather 72
 Listing, Headliner 10
 Listing, Seat..... 10
 Lokweld 22

M

Mallet..... 51
 Marine 63-69
 Markers, China..... 10
 Mesh, Boat Seat 64
 Mesh, Vinyl Coated 64
 Muslin 3

N

Nail Strip 16
 Nails, Decorative 15
 Needles 17-18
 Needles, Curved 17
 Needles, Machine..... 18
 Needles, Straight 17
 Needles, Tufting..... 18
 Needles, Variety Pack..... 17
 Nibbed Back Rubber Mat 57

O

Oil, Machine..... 4

P

Pen, Space 10
 Perforation 72
 Pins, T..... 12
 Pins, Twist 12
 Pins, Upholstery 12
 Pliers, Hog Ring..... 13
 Pliers, Staple Puller 52
 Pliers, Three Prong Clip 6
 Pligrip 16
 Press-n-Snap 32
 Puff Poly..... 3

Q

Quick Nailer..... 52

INDEX

R

Razor Blades	52
Regulators	12
Rivets	35
Rocker Springs	7
Ruler	51

S

Scissors	52
Screw Covers	50
Screw Studs	32
Screws	47-50
Seam Tape	4
SEM Classic Coat	30
SEM Color Coat	30
SEM GripTide	29
SEM Marine Coat	30
SEM Prep & Supplies	29
SEM	29-32
Shears	52
Shock Cord	9
Silicone	4
Silk Film	3
Skirtex	7
Slides, Webbing	8
Snap Setters	32
Split Hidem	26
Sponge Rod	25
Spray Glue Guns	53
Springs	5-6
Springs, Coil	5
Springs, Helical	5
Springs, Marshall Unit	5
Springs, Truck Seat	5
Staple Guns	14
Staple Hidem	26
Staple Removers	53
Staples	14
Steamers	54
Swivel Rocker	7
Swivel, Flat	7
Swivel, Tilted	7

T

Tack Strip Covers	16
Tack Strip, Cardboard	16
Tack Strip, Convertible	55
Tack Strip, Metal	16
Tacks, Blued	16
Teenuts	34
Textron	4
Thread	18-21
Thread, Contrast	21
Thread, High Spec	20
Thread, Monofilament	18
Thread, Nylo	18
Thread, Sunguard	19

T, cont.

Thread, US Nylon	18
Thread, US Polyester	18
Tonneau Cover	56
Tools	51-54
Trunk Liner	57
Tweed	61
Twine, Button	29
Twine, Jute	6
Twine, Spring	6
Typar	4

U

Underlining	64
-------------------	----

V

Velcro	11
Velcro, Seat	11
Velcro, Zebra	11
Ventilators	27
Vinyl Coated Polyester	64
Vinyl Flooring, Caprie	68
Vinyl Flooring, Compass	68
Vinyl Flooring, Hydromat	67
Vinyl Flooring, Hydroweave	67
Vinyl, 4-Way Stretch	70
Vinyl, Automotive	61-63
Vinyl, Camo	70
Vinyl, Clear	56
Vinyl, Economy	70
Vinyl, Exotic	70
Vinyl, Marine	69
Vinyl, Specialty	70
Vinyl, Stay Cool	69

W

Washers	50
Webbing Stretcher	54
Webbing, Convertible	55
Webbing, Elastic	8
Webbing, Jute	8
Webbing, Polypropylene	8
Webbing, Rubber	8
Webbing, Seat Belt	8
Webbing, Ultraflex	8
Weldwood	22
Welt	25-26
Welt, 180 Automotive	26
Welt, Cotton	26
Welt, Marine	26
Welt, Poly	25
Welt, PVC	25
Welt, Tinsel	26
Welt, Tissue	25
Welt, Tonneau	56

W, cont.

Windlace, Cloth	25
Windlace, Compact	25
Windlace, Snap On	25
Wire On, Convertible	55

Z

Zipper	23-24
Zipper, Aluminum	23
Zipper, Coil	23
Zipper, Marine	24
Zipper, Separating	24

FOAM

CUT FOAM



COMFORT [Pink]

1.8lb Density
45lb Compression

Part# **PFC**



DELUXE [Blue]

2.0lb Density
50lb Compression
Anti-Pink Staining

Part# **PFD**



SUPER [Off White]

2.5lb Density
55lb Compression
High Resilience

Part# **PFSUP**



ULTRA [Off White]

2.5lb Density
45lb Compression
High Resilience

Part# **PFU**



QUICK DRY [Outdoor]

1.8lb Density
30lb Compression

Part# **PFQ**



All cut foam is priced by the boardfoot.

To calculate the boardfeet,
multiply **length** x **width** x **height**
then divide by 144.

For example, to calculate the boardfeet on
a piece measuring 2" x 24" x 36"

You would multiply **2** x **24** x **36**
to get **1,728**.

You would then divide **1,728** by **144**
to get **12** boardfeet.

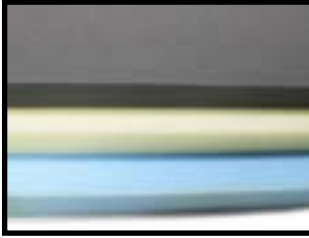
Density only pertains to the weight of the foam, not the firmness. Density does determine the quality and life span of the foam. It is found by weighing a 12" x 12" x 12" piece of foam. If the foam has a 2.0lb density, that means a 12" x 12" x 12" piece of foam weighs 2.0lbs.

Compression determines the firmness and feel of the foam and how it will bear weight. It is found when a foam sample measuring 15" x 15" x 4" is pressed down with a 50 sq. in. circular indenter to compress the material 1" (or 25% of its thickness). If a sample requires 50 pounds of pressure to indent it 1", it has a 50lb compression.

We custom cut slabs, wedges, and bolsters!

FOAM

SLAB FOAM



DELUXE POLY PADS [Blue]

2.0lb Density | 50lb Compression | Anti-Pink Staining

1" x 24" x 82"	Part# POLPAD1
2" x 24" x 82"	Part# POLPAD2
3" x 24" x 82"	Part# POLPAD3
4" x 24" x 82"	Part# POLPAD4
5" x 24" x 82"	Part# POLPAD5
6" x 24" x 82"	Part# POLPAD6

DELUXE POLY MATTRESSES [Blue]

2.0lb Density | 50lb Compression | Anti-Pink Staining

1" x 55" x 82"	Part# POLMAT1
2" x 55" x 82"	Part# POLMAT2
3" x 55" x 82"	Part# POLMAT3
4" x 55" x 82"	Part# POLMAT4
5" x 55" x 82"	Part# POLMAT5
6" x 55" x 82"	Part# POLMAT6

SUPER POLY PADS [Off White]

2.5lb Density | 55lb Compression | High Resilience

1" x 24" x 82"	Part# POLSUP1
2" x 24" x 82"	Part# POLSUP2
3" x 24" x 82"	Part# POLSUP3
4" x 24" x 82"	Part# POLSUP
5" x 24" x 82"	Part# POLSUP5
6" x 24" x 82"	Part# POLSUP6

SUPER POLY MATTRESSES [Off White]

2.5lb Density | 55lb Compression | High Resilience

1" x 55" x 82"	Part# POLMATSUP1
2" x 55" x 82"	Part# POLMATSUP2
3" x 55" x 82"	Part# POLMATSUP3
4" x 55" x 82"	Part# POLMATSUP4
5" x 55" x 82"	Part# POLMATSUP5
6" x 55" x 82"	Part# POLMATSUP6

EXTRA FIRM POLY PADS [Charcoal]

2.0lb Density | 100lb Compression

1" x 24" x 82"	Part# POLXT1 (Packs of 6)
2" x 24" x 82"	Part# POLXT2 (Packs of 3)
3" x 24" x 82"	Part# POLXT3 (Packs of 2)
4" x 24" x 82"	Part# POLXT4 (Packs of 1)
5" x 24" x 82"	Part# POLXT5 (Packs of 1)
6" x 24" x 82"	Part# POLXT6 (Packs of 1)

PRECUT BOLSTERS



Made with our high density Ultra Foam, these bolsters are perfect for use on couches, window seats, and more.

6" x 18"
7" x 22"
8" x 30"
10" x 43"

Part# **PFB6X18**
Part# **PFB7X22**
Part# **PFB8X30**
Part# **PFB10X43**

SEW FOAM



T-Shirt Backed | 58" Wide

**Scrim foam, pleating foam, backed foam*

REGULAR SEW FOAM [Color + Density Vary]

1/4" Thick	Part# CLOBAC4
3/8" Thick	Part# CLOBAC38
1/2" Thick	Part# CLOBACTS

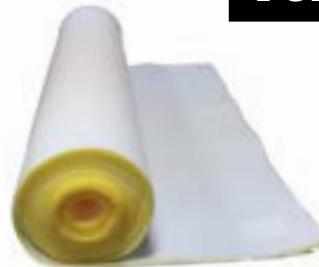
PINK SEW FOAM [Firm]

1/4" Thick	Part# CLOBAC4H
3/8" Thick	Part# CLOBAC38P
1/2" Thick	Part# CLOBACTSP

VELCRO BACKED

1/2" Thick	Part# CLOVEL
------------	---------------------

POLY FOAM ROLLS



Color & Density Varies unless otherwise noted

1/4" x 58" x 30'	Part# POLYR14X58
1/2" x 24" x 30'	Part# POLYR12X24
1/2" x 58" x 60'	Part# POLYR12X58
1/2" x 58" x 60'	Part# POLYR1258 [FR1845C]
1" x 55" x 30'	Part# POLYR1X55
2" x 55" x 15'	Part# POLYR2X55 [Charcoal]

SUPPLIES

CLOSED CELL FOAM



**landau top padding*

Perfect for landau top padding as well as door panels.

58" Wide
Sold by the yard.

1/8" Thick
1/4" Thick

Part# **LANPAD8**
Part# **LANPAD**

EZ FILM



**silk film*

Cover foam cushions with EZ Film in order to slip covers on with ease.

27" Wide | Centerfold [Unfolds to 54"]

100 yards on a roll.
Sold by the roll.

Part# **EZY4810**

COTTON



Used for padding in furniture applications.

White / Synthetic
27" Wide | 12lb Bale
Sold by the bale.

Part# **COTTONW**

POLYESTER BATTING



Used to wrap polyfoam or spring cushions to create a fuller, wrinkle free finish.

Sold by the roll.

This product has an ounce weight but does **not have a thickness. This product is malleable and thickness is not a possible measurement we can provide.*

3/4oz x 30" x 48'
3/4oz x 56" x 25'
3/4oz x 56" x 75'

Part# **P3048**
Part# **P5625**
Part# **P5675**

AIRLAY



Used in outdoor cushions as padding.

2" x 24" x 30'
1.8oz

Sold by the roll.

Part# **P2024**

PUFF POLYESTER



Perfect for pillows, cushions, and toys.

10lb bag
Sold by the bag.

Part# **P468**

MUSLIN



Used as a lining for upholstery and drapes.

100% Cotton
3.6oz
Sold by the yard.

40" Wide Part# **M4000**

SUPPLIES

TYPAR



Designed to be used on the underside of furniture to conceal webbing and springs.

1.4oz | Sold by the yard.

**celestra cloth, black bottom, dust cloth*

Black | 36" Wide
Black | 54" Wide
White | 36" Wide
White | 54" Wide

Part# **WC1036**
Part# **WC1036-54**
Part# **WC1037**
Part# **WC1037-54**

TEXTRON



Designed to be used on the underside of furniture to conceal webbing and springs.

2oz | Sold by the yard.

Part# **TEXTRON**

DENIM / DECKING

Used to cover the deck under loose cushions for a finished look.



36" Wide | 7oz
Tan
Part# **DENIM**



36" Wide | 7oz
Khaki | 480 Heavy Duty
Part# **DENIM2**

BURLAP



Used to cover coil and zig zag springs in upholstery applications

40" Wide | 10oz
Sold by the yard.

Part# **BURLAP**

SEAM TAPE



Seam tape eliminates slipping and helps prevent leakage in seams.

60 yards on a roll. | Sold by the roll.

1/4" Wide
1/2" Wide
3/4" Wide

Part# **SEATAP1**
Part# **SEATAP**
Part# **SEATAP3/4**

SEWING MACHINE OIL



ZOOM SPOUT

Stainless
Telescoping spout reaches everywhere.
Ideal for all sewing machines, sergers, and related equipment.

Sold by the 4oz bottle.

Part# **MACHOILSPOUT**



DYNO SEW-LUBE

Low viscosity
Water White
Ideal for sewing machines, textile machinery, and parts.

Sold by the 1 gallon bottle.

Part# **MACHINEOIL1GAL**

SILICONE



Dries fast, will not stain.

Use silicone to waterproof materials or help reduce friction.

11oz can.
Sold by the can.

Part# **SILICONE**

SPRINGS

ZIG ZAG SPRINGS



Used in furniture pieces with shallow frames or automotive seats.

Use 9 gauge for seat bottoms and 11 gauge for backs.

**no sag springs, sagless springs*

9 gauge | 50 foot roll
9 gauge | 24" pieces
11 gauge | 50 foot roll
11 gauge | 24" pieces

Part# **SP2009**
Part# **SP2024**
Part# **SP2011**
Part# **SP5112**

REPAIR BRACKETS



Use these brackets to quickly and easily repair broken zig zag springs.

Sold by the each.

Part# **SPR2000Z**

COIL SPRINGS



Most commonly used in antique furniture.

Sold by the each.

6" Tall Part# **SP2106**
8" Tall Part# **SP2108**
10" Tall Part# **SP2110**

TORSION SPRINGS



Torsion Springs are used for corner and edge support of spring constructions.

Sold by the each.

Part# **SP2012**

MARSHALL SPRING UNIT

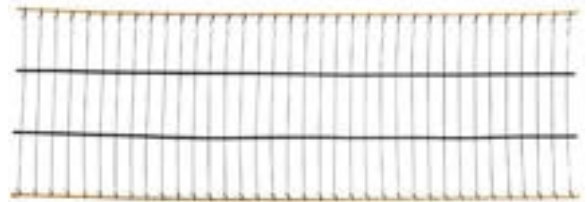


These spring cushion units can be used to build any size cushion by re-arranging segments of springs and hog ringing them together.

4" Tall | 7 springs x 10 Springs
Sold by the each.

Part# **SP3710**

FLEX-O-LATORS



Grid style support for late model truck and car seats.

Sold by the yard.

12" Wide	Part# FLEX12
14" Wide	Part# FLEX14
15.5" Wide	Part# FLEX15.5
16" Wide	Part# FLEX16
16.75" Wide	Part# FLEX16.75
18" Wide	Part# FLEX18

HELICAL SPRINGS



These springs can be used with no sag and zig zag springs as well as Flex-O-Lator truck seat springs. These springs create a flexible yet stabilizing action and are idea for use on chair backs and seats.

3" Long Part# **SP3203**

SPRINGS

EK CLIPS

Holds zig zag springs firmly in place.

100 clips in a pack. | Sold by the pack.



Rubber Coated
Part# **V4451**



Paper Lined
Part# **EK229-0160**

RJ CLIPS



RJ Clips allow the spring to drop 7/8" below the rail top.

50 pieces in a pack.
Sold by the pack.

Part# **RJCLIP**

G CLIPS



G Clips allow the spring to drop 7/8" below the rail top.

Approx. 55 clips/
pound.
Sold by the pound.

Part# **GCLIP**

BORDER WIRE CLIPS



Cloth lined cushion spring clip to fasten springs to each other or to border wire.

7/8" Long
For 1/4" or two 8ga wires.
100 pieces in a box.

Part# **AV7707**

THREE PRONG CLIPS



Used for joining coil springs to edge wire.

For use with tool **V445-3**

250 clips in a box.
Sold by the box.

Part# **V44503**

THREE PRONG CLIP PLIERS



Used for applying edge wire clips to edge wire and springs.

For use with part **V44503**

Part# **V445-3**

JUTE TWINE



Diamond 4-ply 100% long fiber hemp twine for tying springs together.

Sold by the 11lb spool.

Part# **SPRTWI**

GEL PAD



Gel Pads are perfect for adding comfort to motorcycle seats. They are easily cut to size for a custom fit.

1/2" x 16" x 18"
Part# **GELPAD**

Visit www.albrightssupply.com for more products, information, tools, pricing, and real-time inventory!

Follow us on Facebook, Instagram, and Twitter.

SUPPLIES

FULL TURN FLAT SWIVEL



Full Turn swivel revolving fixture for furniture.

6 3/4" Diameter

Sold by the each.
Part# **R5007**

FULL TURN TILTED SWIVEL



Full Turn swivel revolving fixture for furniture.

6 3/4" Diameter
3 Degree Pitch

Sold by the each.
Part# **R1363**

ROCKER SWIVEL BASE



5 Leg Base
5 1/4" Height
25" Base Diameter
3 Degree Pitch

Sold by the each.

Part# **5LEG**

PLATFORM ROCKER SPRINGS



Heavy Duty 8 gauge double coil rocker springs.

Sold by the each.

Part# **PLATROC**

SKIRTEX



Use to stiffen furniture skirts and keep them from folding up.

Non-woven

100 yards on a roll.
Sold by the roll.



5" Wide	Part# S1050
7" Wide	Part# S1070
8" Wide	Part# S1008
9" Wide	Part# S1009
10" Wide	Part# S1010
12" Wide	Part# S1012

CRINOLINE



Use keep furniture skirts from folding up.

Woven

100 yards on a roll.
Sold by the roll.



7" Wide	Part# SC1007
9" Wide	Part# SC1009
12" Wide	Part# SC1012

EDGE ROLL



Provides a smooth clean edge and protects the padding and foam from rubbing through the fabric.

50 feet on a roll
Sold by the roll.

1/2" Thick	Part# E5050
3/4" Thick	Part# E5052
1" Thick	Part# E5130
1 1/4" Thick	Part# E5125

WEBBING

JUTE WEBBING



Used for support in furniture. Use the 9lb in backs and the 11lb in seats.

3.5" Wide
72 yards on a roll.
Sold by the roll.

Black Line [9lb]
Red Line [11lb]

Part# **WEBB9**
Part# **WEBB**

ULTRAFLEX WEBBING



Used in couches and other furniture pieces.

10% Stretch
Blue Line
3" Wide
Sold by the yard.

Part# **WEBB3**

SEAT BELT WEBBING

Black
2" Wide | 4 Panel
4,800lb Tensile Strength
Sold by the yard.

Part# **NYLON2**



ELASTIC RUBBER WEBBING



Used to create support in couches and other furniture pieces.

2" Wide | Sold by the yard.

Part# **ELASTIC2**

RUBBER WEBBING



Used to create support in couches and other furniture pieces.

2" Wide
Webbing is sold by the yard.
Clips are sold by the each.



Webbing Part# **W2000**
Clips Part# **W2001**

POLYPROPYLENE WEBBING



This heavy weight polypropylene webbing is perfect for canvas and sports bags, transportation covers, and more.

85lb tensile strength.
Sold by the yard.

1" Black
1" White
1 1/2" Black
1 1/2" White
2" Black
2" White

Part# **NYLON1B**
Part# **NYLON1**
Part# **NYLON1-1-2B**
Part# **NYLON1-1-2**
Part# **NYLON2B**
Part# **NYLON2W**

TRI-SLIDES



3-bar slides secure loose webbing and also provide length adjustment on strap assemblies.

Sold by the each.

1" Black Plastic
1" Metal
1 1/2" Black Plastic
1 1/2" Black Plastic [HD]
2" Black Plastic

Part# **SN3415**
Part# **NYLSLM**
Part# **NYLSL112**
Part# **SL511-38**
Part# **SL512-51**

STEP LOCK BUCKLE



Ladder Lock Buckles minimize slippage of webbing and provide for easy release or tightening adjustments with one hand.

1" Wide | Sold by the each.

**ladder lock slides*

Part# **NYLONLL**

BUCKLES



Side release buckles offer quick release action along with webbing grip and adjustment.

Sold by the each.

1" Black Plastic
1 1/2" Black Plastic
2" Black Plastic

Part# **NYLONBU**
Part# **NYLONBU12**
Part# **NYLONBU2**

SUPPLIES

ELASTIC

Flat knit woven elastic.

1/2" sold by the 100 yard roll.
All other sizes sold by the yard.



1/2" Black
1/2" White
1" Black
1" White
1 1/2" White
2" Black
2" White

Part# **ELASTIC12B**
Part# **ELASTIC12W**
Part# **ELASTIC1B**
Part# **ELASTIC1W**
Part# **ELASTIC112**
Part# **ELASTIC2B**
Part# **ELASTICW**

SHOCK CORD



Idea for tire covers, tie downs, emergency seat repair, and more.

Made of marine grade nylon.
Sold by the yard.

1/8" Thick
3/16" Thick
1/4" Thick
5/16" Thick
3/8" Thick

Part# **SCHCOR18**
Part# **SCHCOR316**
Part# **SCHCOR**
Part# **SCHCOR516**
Part# **SCHCOR3**

Visit www.albrightsupply.com for more products, information, tools, pricing, and real-time inventory!

PLASTIC SHOCK CORD HOOK



With this plastic adjustable hook, the 3/16", 1/4", and 5/16" shock cord can be adjusted to any desired length easily in just seconds.

Durable | Rustproof
Sold by the each.

Part# **SCHCORH**

METAL SHOCK CORD HOOKS



Black Nylon Coated
Coil Spring Hook

Sold by the each.

For use with 1/4" Cord
For use with 3/8" Cord
For use with 1/2" Cord

Part# **SCHHOOK**
Part# **SCHHOOK38**
Part# **SCHHOOK12**

SNAP HOOKS

Snap Hooks are used to hold loose cushions on sofas and chairs.

Sold by the each.



1/2" Metal
Snap Hook
Part# **SN250**



1" Stainless Steel
Snap Hook
Part# **V67-05**



1 1/2" Black Plastic
Snap Hook
Part# **SH310-38**

SUPPLIES

SEAT LISTING

Seat listing is typically sewn to the edge of seat covers to hog ring the cover to the frame.

100 yards on a roll.
Sold by the roll.



NO CORD

1 1/2" Wide
Part# **TYPAR1**

2" Wide
Part# **TYPAR2**



WITH CORD

1 1/2" Wide
Part# **TYPARC**

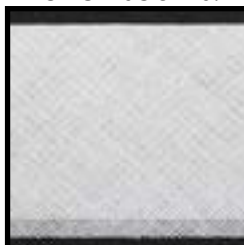
HEADLINER LISTING



Headliner Listing is sewn to the back side of headlining material to serve as a bow sleeve in older cars with a suspended / bow headliner. It can also be used as a backing for French seams.

1 1/2" Wide | 100 yards on a roll.
Sold by the roll.

Part# **HEADLIST**



CHALK



Use Prang Chalk to create patterns on vinyl or cloth. This chalk is dustless and erases cleanly with no ghosting.

12 pieces in a box.
Sold by the box.

White
Yellow

Part# **CHALK**
Part# **CHALKY**

TAILOR'S CHALK



Tailors' chalk is perfect for drawing out patterns on fabric as it is easy to brush off and leaves no marks. It is made of American Clay & Whitening Powders.

36 pieces in a box.
Sold by the box.

Part# **CHALKT**

CHINA MARKERS



China Markers make vivid impressions on all types of surfaces including glass, plastic, cellophane, and wood.

12 markers in a box.
Sold by the box.

**grease pencils*

White
Black
Yellow

Part# **CHINA**
Part# **CHINAB**
Part# **CHINAY**

SPACE PEN

Use on leather, rubber, and vinyl to create patterns. Cleans off using mild soap and water.

Silver Ink | Sold by the each.
Part# **SPACEPEN**



HOOK & LOOP FASTENERS

HOOK AND LOOP FASTENERS



SEW ON HOOK & LOOP

Sew On Hook and Loop Fasteners are suitable for use in upholstery applications like drapery lines or decorative furnishings.

25 yards on a roll.
Sold by the yard.

BLACK

1" Hook
1" Loop
1 1/2" Hook
1 1/2" Loop
2" Hook
2" Loop

Part# **VEL1BSH**
Part# **VEL1BSL**
Part# **VEL1-1/2SH**
Part# **VEL1-1/2SL**
Part# **VEL2BSH**
Part# **VEL2BSL**

BEIGE

1" Hook
1" Loop
2" Hook
2" Loop

Part# **VELBE1SH**
Part# **VELBE1SL**
Part# **VELBE2SH**
Part# **VELBE2SL**

WHITE

1" Hook
1" Loop
2" Hook
2" Loop

Part# **VELW1SH**
Part# **VELW1SL**
Part# **VELW2SH**
Part# **VELW2SL**



ADHESIVE HOOK & LOOP

Adhesive Backed Hook and Loop fasteners affix well to aluminum, ceramics, foams, fabrics, glass, metal, paper, wood, and drywall.

25 yards on a roll.
Sold by the yard.

BLACK

1" Hook
1" Loop
1 1/2" Hook
1 1/2" Loop
2" Hook
2" Loop

Part# **VEL1BH**
Part# **VEL1BL**
Part# **VEL1-1/2H**
Part# **VEL1-1/2L**
Part# **VEL2BH**
Part# **VEL2BL**

BEIGE

1" Hook
1" Loop

Part# **VELBE1H**
Part# **VELBE1L**

WHITE

1" Hook
1" Loop
2" Hook
2" Loop

Part# **VELW1H**
Part# **VELW1L**
Part# **VELW2H**
Part# **VELW2L**

HOOK AND LOOP STICKS



Used to attach boat headliners, wall mats in gyms, awnings, and more.

1" Wide | 4' Long | Black

Hook Part# **VELSTICKH1**
Loop Part# **VELSTICKL1B**

ZEBRA VELCRO



1 1/2" white loop velcro used on card seat covers.

**seat velcro*

Sold by the yard
Part# **VELZ**

Sold on 25 yard spools
Part# **VELZ-25**

SUPPLIES

PANEL BOARDS



For use in door panels, hat racks, and more.

1/8" x 32" x 48"
Black | Waterproof

Sold in packs of 4.

Part# **PBWP**

CHIP BOARD



Chip Board is used to make patterns, on the bottom of stools, chairs, or furniture arms to create a smooth or stabilizing surface.

1/32" x 26" x 38"

Sold in packs of 10.

Part# **CHIP2638**

TWIST PINS



Twist pins can be used to hold slipcovers, arm covers and bed skirts in place; simply insert point of the pin and twist until flush.

100 pins in a pack.
Sold by the pack.

Part# **N3540**

UPHOLSTERY PINS



Use upholstery pins to help hold fabric in place while making patterns and cutting.

3 1/2" Long | 16 Gauge
3 dozen pins in a pack.
Sold by the pack.

Part# **V190**

UPHOLSTERY T-PINS



Use upholstery t-pins to help hold fabric in place while making patterns and cutting.

2" Long | 19 Gauge
350 pins in a pack.
Sold by the pack.

Part# **V189-32**

REGULATORS

Use to smooth irregularities in the stuffing beneath the coverings of a cushion.



NO HANDLE

6" Long [Light]
8" Long [Light]
10" Long [Heavy]
12" Long [Light]

Part# **N5006**
Part# **N5008**
Part# **N306.5-10**
Part# **N5012**



BLACK PLASTIC HANDLE

8" Long
10" Long

Part# **N520-8**
Part# **N4910**

SUPPLIES

J STYLE SEAT CLIPS

J-Clips are sewn to the seat cover to keep the material tight to the seat frame.



9/32" x 27/32"
Black
Sold in by the yard.
Part# **SC001**



3/8" x 1"
Black
Sold in 54" lengths.
Part# **SC003**



1.2" Opening
White/Clear
Sold in 54" lengths.
Part# **SC004**



3/8" x 1"
Black
Sold in 54" lengths.
Part# **SC005**



1/4" x 1 1/16"
Black
Sold in 54" lengths.
Part# **SC008OLD**



5/16" x 1 1/16"
Black
Sold in 54" lengths.
Part# **SC011**

FLAT SEAT CLIPS



Use to hog ring seat covers to the frame.

3/4" Wide | Clear
Sold in 54" lengths.
Part# **SCXSS-0069701**

HOG RINGS

Used for attaching seat covers to the frame and other fastening jobs.



BENT BACKS

3/4" Steel
14 gauge

1lb Box
5lb Box
25lb Box

Part# **HOGR1**
Part# **HOGR5**
Part# **HOGR25**



STRAIGHT BACKS

3/4" Steel

5lb Box
25lb Box

Part# **HOGR5S**
Part# **HOGR25S**

HOG RING PLIERS



Bent to the Side

Part# **L**



Flat

Part# **XX**



Turned Upwards

Part# **XXL**

STAPLES

STAPLES

TEGO STAPLES

71 Series | 3/8" Crown | 22 Gauge
10,000 staples in a box.
Sold by the box.

Galvanized

1/4" Long	Part# T07-7106
3/8" Long	Part# T07-7110
1/2" Long	Part# T07-7112
9/16" Long	Part# T07-7114

Stainless Steel

1/4" Long	Part# T07-7106S
3/8" Long	Part# T07-7110S
1/2" Long	Part# T07-7112S

BECK STAPLES

#7 Series | 3/8" Crown | 22 Gauge
10,000 staples in a box.
Sold by the box.

Liquor Finish

5/32" Long	Part# EMP532
3/16" Long	Part# EMP316
1/4" Long	Part# EMP14
3/8" Long	Part# EMP38
7/16" Long	Part# EMP716
1/2" Long	Part# EMP12
9/16" Long	Part# EMP916

Stainless Steel

1/4" Long	Part# EMP14SS
3/8" Long	Part# EMP38SS
1/2" Long	Part# EMP12SS

DUOFAST STAPLES

50 Series | 1/2" Crown | 20 Gauge
5,000 staples in a box.
Sold by the box.

Liquor Finish

1/4" Long	Part# D508
5/16" Long	Part# D5010
3/8" Long	Part# D5012
1/2" Long	Part# D5016

Stainless Steel

1/4" Long	Part# D508SS
3/8" Long	Part# D5012SS
1/2" Long	Part# D5016SS



DUOFAST STAPLES

33 Series | 5/16" Crown | 22 Gauge
10,000 staples in a box.
Sold by the box.

Liquor Finish

1/4" Long	Part# D338
3/8" Long	Part# D3312
1/2" Long	Part# D3316
9/16" Long	Part# D3318

STAPLE GUNS

FASCO

Single Shot | Air Pressure 60-100psi
For use with 3/8" Crown Staples
Use on light wood assemblies, carpet laying, or upholstery.



Regular Nose
Part# **FASCO**



2" Long Nose
Part# **FASCOLN**



MERIT PRO 71 SERIES

Aluminum Housing
Rubberized Handle
For use with 3/8" Crown Staples
Use on upholstery, automotive, marine, and bedding.

Part# **MP7116P**

DECORATIVE NAILS

C. S. OSBORNE & CO.

NEW

Decorative Nails

NEW

Honey Comb Bronze
Lacquered Rolled



No. 6910-BL 1/2
7/16" diameter
1/2" nail

Honey Comb Old
Copper Lacq. Rolled



No. 7004-OCLR 1/2
1/2" diameter
1/2" nail

Old Gold Speckled



No. 7110-OGS 1/2
7/16" diameter
1/2" nail

Old Gold



No. 6870-OG 1/2
7/16" diameter
1/2" nail

Old Gold
Speckled Red



No. 6880-OGSR 1/2
3/8" diameter
1/2" nail

Old Gold
Speckled Red



No. 6881-OGSR 5/8
5/8" diameter
5/8" nail

Copper Plated



No. 6941-CP 1/2
3/8" diameter
1/2" nail

Copper Plated Flat



No. 6940-CP 1/2
1/2" diameter
1/2" nail

French Natural Sm.



No. 681 1/2
3/8" diameter
1/2" & 5/8" nail

French Natural



No. 682 1/2
7/16" diameter
1/2" & 5/8" nail

French Natural



No. 6934-FN 5/8
5/8" diameter
5/8" nail

French Natural
High Dome



No. 6931-FN 5/8
11/16" diameter
5/8" nail

Nickel Plated



No. 6950-NP 1/2
5/16" diameter
1/2" nail

Nickel Plated



No. 682N 1/2
7/16" diameter
1/2" & 5/8" nail

Nickel Plated



No. 6960-NP 1/2
1/2" diameter
1/2" nail

Oxford Nickel
Plated



No. 6901-NP 1/2
7/16" diameter
1/2" nail

Oxford Old Copper
Lacquered Rolled



No. 7003-OCLR 1/2
7/16" diameter
1/2" nail

Oxford Hammered



No. 680 1/2
7/16" diameter
1/2" & 5/8" nail

Zinc Plated Matte



No. 6980-ZPM 1/2
7/16" diameter
1/2" nail

Daisy Ornamental



No. 683 1/2
7/16" diameter
1/2" & 5/8" nail

Daisy Old Copper
Lacquered Rolled



No. 7001-OCLR 1/2
7/16" diameter
1/2" nail

Overlap



No. 684 1/2
7/16" diameter
1/2" & 5/8" nail

Overlap Old Copper
Lacquered Rolled



No. 7002-OCLR 1/2
7/16" diameter
1/2" nail

Bronze Renaissance
Lacquered Rolled



No. 6970-BRLR 1/2
7/16" diameter
1/2" nail

Brass Plated



No. 6920-BP 1/2
1/4" diameter
1/2" nail

Brass Plated



No. 6925-BP 1/2
7/16" diameter
1/2" nail

Brass Plated



No. 6930-BP 1/2
3/4" diameter
1/2" nail

Antique Oxidized



No. 6990-AO 1/2
7/16" diameter
1/2" nail

Antique Oxidized



No. 6993-AO 5/8
5/8" diameter
5/8" nail

Antique Oxidized



No. 6992-AO 5/8
3/4" diameter
5/8" nail

Old Brass Speckled



No. 6860-OBS 1/2
7/16" diameter
1/2" nail

Spanish



No. 6890-SN 1/2
3/8" diameter
1/2" nail

Spanish



No. 685SM 1/2
7/16" diameter
1/2" nail

Spanish



No. 685 1/2
5/8" diameter
1/2" nail

Spanish



No. 6891-SN 5/8
3/4" diameter
5/8" nail

For more details and pricing information please contact us.

125 Jersey St. Harrison, NJ 07029 U.S.A.

Phone: 973-483-3232 Fax: 973-484-3621 Email: csos@csosborne.com

www.csosborne.com

TACK STRIPS

CONTINUOUS NAIL STRIP



Simulates head to head nails.
Matches French Natural [FRENAT] nails.
50 yards on a roll. | Sold by the roll.

Part# **NAISTR**

CARDBOARD TACK STRIP

Used to create a clean and crisp edge when blind tacking fabric in place.



ECONOMY TACK STRIP

1/2" Thick
100 yards on a roll.
Sold by the yard.

Part# **TACSRROLL**



HARD TACK STRIP

1/2" Thick
100 yards on a roll.
Sold by the yard.

Part# **TACH**



HARD TACK STRIP

1/2" Thick
38" Long
Sold in 5lb bundles.

Part# **T3605**

BLUED TACKS

Used for fixing soles to shoes or upholstery to furniture.
Sold in 1lb boxes.

7/32" x 3/8"
7/32" x 1/2"
7/32" x 3/4"

Part# **T6003**
Part# **T6006**
Part# **T6014**



METAL TACK STRIP

Use to create a clean, straight edge on upholstery projects and tacks the fabric in place without the need for staples.

METAL TACK STRIP

30" Long
8oz
100 strips in a box.
Sold by the box.

Part# **T3000**



VELVET EDGE

27" Long
100 strips in a box.
Sold by the box.

Part# **VELEDG**



TACK STRIP COVERS

For use with T3000
25 covers in a pack.
Sold by the pack.

Part# **T30PS**



PLIGRIP



Primarily used in curved areas such as arms and arched backs of furniture.

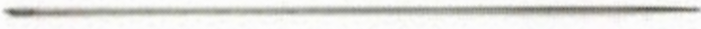
Sold by the 100 foot roll.

*flex trim

Part# **PLIGRIP1**

NEEDLES

STRAIGHT NEEDLES



Straight needles are useful for multiple jobs like sewing springs to webbing and attaching buttons through padded backing.



ROUND POINT

ROUND POINT

8" Long [13ga]
12" Long [12ga]
14" Long [12ga]
16" Long [12ga]
18" Long [12ga]



SQUARE POINT

SQUARE POINT

8" Long [14ga]
10" Long [12ga]
12" Long [12ga]
14" Long [11ga]
16" Long [11ga]

DOUBLE ROUND POINT

10" Long [13ga]
12" Long [12ga]
14" Long [12ga]
18" Long [11ga]

VARIETY PACK

Round Point
6" | 8" | 10" | 12"

Part# **554-8**
Part# **554-12**
Part# **554-14**
Part# **554-16**
Part# **554-18**

Part# **506-8**
Part# **556-10**
Part# **556-12**
Part# **556-14**
Part# **556-16**

Part# **555-10**
Part# **555-12**
Part# **555-14**
Part# **555-18**

Part# **K-5**

CURVED NEEDLES



Curved Needles are perfect for hand sewing difficult or awkward seams.

**Size is based on overall length of the needle, not the distance from the point to the eye.*



ROUND POINT



SQUARE POINT

ROUND POINT

2" Long [17ga]
2 1/2" Long [17ga]
3" Long [16ga]
3 1/2" Long [16ga]
4" Long [15ga]
5" Long [14ga]
6" Long [14ga]
8" Long [13ga]
10" Long [13ga]

Part# **501-2**
Part# **501-25**
Part# **501-3**
Part# **501-35**
Part# **501-4**
Part# **501-5**
Part# **501-6**
Part# **501-8**
Part# **501-10**

SQUARE POINT

2" Long [17ga]
2 1/2" Long [17ga]
3" Long [16ga]
3 1/2" Long [16ga]
4" Long [15ga]
5" Long [14ga]
6" Long [14ga]
8" Long [13ga]
10" Long [13ga]

Part# **502-2**
Part# **502-25**
Part# **502-3**
Part# **502-35**
Part# **502-4**
Part# **502-5**
Part# **502-6**
Part# **502-8**
Part# **502-10**

VARIETY PACK

Round Point
2 1/2" | 3" | 3 1/2" | 4"
3" | 4" | 5" | 6"

Part# **K7**
Part# **K-3**

Visit www.albrightssupply.com for more products, information, tools, pricing, and real-time inventory!

Follow us on Facebook, Instagram, and Twitter.

NEEDLES & THREAD

MACHINE NEEDLES



10 needles in a pack.
Sold by the pack.

CONSEW/SINGER

135x17 140-22
135x17 180-24

Part# **SUP135X17-140**
Part# **SUP135X17-180**

PFAFF

190R 140-22
190R 180-24

Part# **SUP190R-140**
Part# **SUP190R-180**

TUFTING NEEDLES

Used for adding buttons to cushions.



Tufting Needle
Part# **V417**

Clasps
Part# **V418**



Tufting Needle
Part# **V613**

Clasps
Part# **V614**



MONOFILAMENT THREAD



Monofilament thread is a clear thread used anywhere you don't want your stitches to show.

Tex Size 60 | 630 Denier
Suitable for outdoor use.
Sold in 1.5lb spools.

Part# **T8900**

US THREAD



US Thread provides superior seam strength, product life, and chemical and mildew resistance.

Sold by the spool.

All colors available in 4oz spools.
*Available in 1lb

BONDED NYLON B69

Beaver
Black*
Butterscotch
Chocolate
Graphite
Midnight
Natural
Taupe
White*
Wine

Part# **BN745**
Part# **BN744**
Part# **BN793**
Part# **BN797**
Part# **BN740**
Part# **BN794**
Part# **BN722**
Part# **BN760**
Part# **BN721**
Part# **BN787**

BONDED POLYESTER B92

Black*
White*

Part# **BP744**
Part# **BP721**

NYLO THREAD



Nylo UVR thread has a unique oval shaped, single ply construction that produces a low profile in the finished seam and is more abrasion resistant than twisted nylon threads.

Nylon B92 [EE]

1LB SPOOLS

Black
Natural
White

Part# **THRBLK**
Part# **THR NAT**
Part# **THRWHI**

G STYLE BOBBINS [1/2 Gross]

Black
Natural
White

Part# **THBOBB**
Part# **THBOBN**
Part# **THBOBW**

M STYLE BOBBINS [1/2 Gross]

Black
Natural
White

Part# **THBOBMB**
Part# **THBOBM**
Part# **THBOBMWHITE**

SUNGUARD THREAD

All colors available in B92
4oz spools.

Some colors available in
B92 8oz and 1lb spools and
B138 8oz and 1lb spools.

Matching bobbins are
available for most colors in
G Style size B92. Some
colors available in M Style
size B92.



Natural White 201Q	Blue Wave 213Q
Oyster 202Q	Pacific Blue 214Q
Parchment 239Q	Mediterranean 225Q
Sand 203Q	Dusk Blue 215Q
Beaver 229Q/3187	Navy 216Q
Mocha 230Q/L6582	Dk. Teal 217Q
Beige 204Q/L6690	Ocean Green 218Q
Saddle 231Q/L6873	Seafoam 237Q
Taupe 227Q	Sage 238Q
Bay Brown 205Q	Shamrock 219Q
Sunglow 206Q	Forest Green 220Q
Cardinal 207Q	Pearl Grey 221Q
Burgundy 208Q	Shark Grey 222Q/L6941
Black Cherry 209Q/L6821	Med. Titanium 234Q/L6937
Cedar 252Q	Med. Opal 235Q/L6677
Deep Lilac 211Q	Charcoal 223Q
Sunflower 212Q	Graphite 236Q/L6693
Concord 255Q	Sol. Dyed Black 224Q

Colors Match Marine Acrylic & Automotive OEM Vinyl

Size B92 (T90) & B138 (T135)

*See reverse side for stock availability

HIGH-SPEC THREAD

All colors available in B69 4oz spools.

Some colors available in B69 8oz and 1lb spools.

Matching bobbins are available for most colors in G Style. Some colors available in M Style.

High-Spec Bonded Nylon Thread

MEETS ALL SPECIFICATIONS

AUTOMOTIVE ■ FURNITURE ■ TRANSPORTATION

White 721Q	BlueBell 775Q
Cream 786Q	Slate 772Q
Natural 722Q	Marine 790Q
Beige 751Q	Yale Blue 764Q
Beaver 745Q	Opal 795Q
Caramel 767Q	Omni Blue 771Q
Saddle 793Q	Navy 765Q
Taupe 752Q	Leaf 770Q
Lt. Brown 763Q	Dk. Jade 781Q
Brown 756Q	Kelly Green 780Q
Dk. Brown 758Q	Dk. Green 779Q
Lemon 733Q	Carafe Green 783Q
Orange 755Q	Lt. Grey 776Q
Toboggan 753Q	Silver 792Q
Scarlet 766Q	Dk. Grey 777Q
Red 757Q	Med. Graphite 796Q
Wine 787Q	Charcoal 785Q
Dk. Claret 788Q	Black 744Q

Thread Made in USA

Size B69 (T70) and B92 (T90)

*See reverse side for stock availability

CONTRAST THREAD

QTC "CONTRAST"

B277 (T-270) Bonded Nylon Thread

All colors available in
T-270 8oz spools.

For seams that get noticed



Colors are stocked in 8 oz. units
Recommended needle size: 24-26

Since the conditions of use are beyond our control, the user should determine if the characteristics are suitable for the intended purpose.

ADHESIVE

WELDWOOD CONTACT ADHESIVE



The ideal contact cement for automotive interior applications. Its high heat resistance is well suited for adhering headliners, fabric, and many other materials during automotive refurbishment.

1 Gallon Natural
5 Gallon Natural
5 Gallon Red

Part# **WELDWOODG***
Part# **WELDWOODN****
Part# **WELDWOODR****

*1 Gallon Cans can only be shipped via Ground.
Cannot be shipped to certain states.

**5 Gallon Cans are not eligible for flat or free shipping and must be shipped via LTL.

LOKWELD CONTACT ADHESIVE



Lokweld offers superior heat resistance and bond strength which is perfect for interior automotive, marine, and upholstery applications. It bonds carpet, cloth, foam, headliners, landau tops, and leather to cardboard, foam, metal, or wood.

1 Gallon Natural
5 Gallon Natural

Part# **LOKWELD-1***
Part# **LOKWELD-5****

*1 Gallon Cans can only be shipped via Ground.
Cannot be shipped to CA.

**5 Gallon Cans are not eligible for flat or free shipping and must be shipped via LTL.

ES2000

NO SHIPPING TO CA



Foam & Fabric Glue
Quick Tack, Low
Soak In, Waterproof

*Not recommended for
headliners.

12oz cans.
Sold by the can.
Part# **ES2000**

CAMIE 303

NO SHIPPING TO CA



Foam & Fabric Glue
Quick Tack, Strong
Bond, Soft Glue Line.

Tinted Orange

12oz cans.
Sold by the can.
Part# **CAMIE303**

FAST TACK

High Temp Glue

Formulated for the
automotive
professional, use this
adhesive for
headliners, vinyl
tops, and more.

13oz cans.
Sold by the can.
Part# **FASTACK**

PRO

NO SHIPPING TO CA



Foam & Fabric Glue
Fast tack, low soak
in, forms flexible
bonds.

*Not recommended for
headliners.

10oz cans.
Sold by the can.
Part# **P0317-20**

PERFORMANCE



High Temp Glue

Features high heat
resistance and
superior bond
strength. Perfect for
headliners, carpets,
and foams.

12oz cans.
Sold by the can.
Part# **HIGTEM**

WELDWOOD SPRAY



High-strength, high-
temp resistant
formulation bonds
with most woods,
metal, laminate, and
many plastics.

16oz cans.
Sold by the can.
Part# **WELDWOODAC**

HH-66 is used extensively for bonding vinyl coated and vinyl laminated fabrics to themselves or to various materials. It is also perfect for sealing or waterproofing stitched seams.

1 quart cans. | Sold by the can.
Part# **HH66Q**



HH-66

ZIPPER

ALUMINUM ZIPPER

Aluminum Zipper is perfect for work wear, jeans, furniture cushions, or other furniture projects.



ALUMINUM ZIPPER CHAIN

100 yards on a spool. Sold by the yard.

#4 Beige Chain [7/16" Tape]	Part# Z4000
#5 Beige Chain [9/16" Tape]	Part# AZ5BEI
#5 Black Chain [9/16" Tape]	Part# AZ5BLK
#5 White Chain [9/16" Tape]	Part# AZ5WHI



ALUMINUM ZIPPER SLIDES

100 slides in a pack.

#4 Single Pull Slides [sold by the pack]	Part# Z4050
#5 Single Pull Slides [sold by the each]	Part# AZ5SP

COIL ZIPPER

#4.5 Coil Zipper is perfect for furniture applications and purses. #5 Coil Zipper is perfect for duffel bags, backpacks, and jackets. #8, #9, and #10 Coil Zippers are perfect for jeeps, convertible tops, and tents.

100 yards on a roll. Sold by the yard. | 100 slides in a pack. Sold by the each.



COIL ZIPPER CHAIN

#4.5 Beige Chain [1/2" Tape]	Part# CZI45BEI
#4.5 Black Chain [1/2" Tape]	Part# CZI45BLK
#4.5 White Chain [1/2" Tape]	Part# CZI45W
#5 Beige Chain [1/2" Tape]	Part# CZI5BE
#5 Black Chain [1/2" Tape]	Part# CZI5B
#5 White Chain [1/2" Tape]	Part# CZI5W
#8 Black Chain [3/4" Tape]	Part# CZI8
#9 Black Chain [3/4" Tape]	Part# CZI9B
#9 White Chain [3/4" Tape]	Part# CZI9W
#10 Black Chain [3/4" Tape]	Part# CZI10B
#10 White Chain [3/4" Tape]	Part# CZI10



COIL ZIPPER SLIDES

#4.5 Beige Single Pull Slides	Part# CZI45SPBEI
#4.5 Black Single Pull Slides	Part# CZI45SPBLK
#4.5 White Single Pull Slides	Part# CZI45SP
#5 Beige Single Pull Slides	Part# CZI5SPBEIGE
#5 Black Single Pull Slides	Part# CZIBSP
#5 Black Double Pull Slides	Part# CZIB5DP
#5 White Single Pull Slides	Part# CZI5SP
#5 White Double Pull Slides	Part# CZI5DP
#8 Black Single Pull Slides	Part# CZI8SP
#9 Black Single Pull Slides	Part# CZI9BSP
#9 White Single Pull Slides	Part# CZI9WSP
#10 Black Single Pull Slides	Part# CZI10BSP
#10 Black Double Pull Slides	Part# CZI10DPB
#10 White Single Pull Slides	Part# CZI10SP
#10 White Double Pull Slides	Part# CZI10DPW

ZIPPER

MARINE ZIPPER

#5 Marine Zipper is perfect for boat cushions, bags, and jackets. #8 Marine Zipper is perfect for tents, sleeping bags, and marine upholstery. #10 Marine Zippers are perfect for boat window enclosures, boat covers, sail bags, and bimini tops.

100 yards on a roll. Sold by the yard. | 100 slides in a pack. Sold by the each.



MARINE ZIPPER CHAIN

#5 Black Chain [9/16" Tape]
#5 White Chain [9/16" Tape]
#8 Black Chain [5/8" Tape]
#8 White Chain [5/8" Tape]
#10 Black Chain [11/16" Tape]
#10 White Chain [11/16" Tape]

Part# **MZIB5**
Part# **MZI5**
Part# **MZI8B**
Part# **MZI8**
Part# **MZI10B**
Part# **MZI10**



MARINE ZIPPER SLIDES

#5 Black Single Pull Slides
#5 Black Double Pull Slides
#5 White Single Pull Slides
#5 White Double Pull Slides
#8 Black Single Pull Slides
#8 White Single Pull Slides
#10 Black Single Pull Slides
#10 Black Double Pull Slides
#10 White Single Pull Slides
#10 White Double Pull Slides

Part# **MZI5BSP**
Part# **MZI5DPB**
Part# **MZI5SP**
Part# **MZI5DP**
Part# **MZI8BSP**
Part# **MZI8SP**
Part# **MZI10SPB**
Part# **MZI10DPB**
Part# **MZI10SP**
Part# **MZI10DP**

SEPARATING MARINE ZIPPERS

#10 MARINE ZIPPERS

Double Pull Slides | White
24" Long Part# **MZI24**
36" Long Part# **MZI36**
48" Long Part# **MZI48**
54" Long Part# **MZI54**
60" Long Part# **MZI60**
72" Long Part# **MZI72**
84" Long Part# **MZI84**
96" Long Part# **MZI96**
108" Long Part# **MZI108**
120" Long Part# **MZI120**

#10 MARINE ZIPPERS

Double Pull Slides | Black
24" Long Part# **MZIB24**
36" Long Part# **MZIB36**
48" Long Part# **MZIB48**
54" Long Part# **MZIB54**
60" Long Part# **MZIB60**
72" Long Part# **MZIB72**
84" Long Part# **MZIB84**
96" Long Part# **MZIB96**
108" Long Part# **MZIB108**
120" Long Part# **MZIB120**

SEPARATING COIL ZIPPERS



RING PULL

#10 COIL ZIPPERS

Black
48" Long [Ring Pull] Part# **CZI48S**
72" Long [Double Pull] Part# **CZI72**
74" Long [2 Ring Pulls] Part# **CZI74DS**
84" Long [Double Pull] Part# **CZI84**
96" Long [Double Pull] Part# **CZI96**
96" Long [2 Double Pulls] Part# **CZI96DS**

SUPPLIES

SPONGE ROD



Use sponge rod to create custom windlace.

50 yards on a roll.
Sold by the yard.



3/8" Round Part# **SPOROD38**
1/2" Round Part# **SPOROD12**

HALF ROUND SPONGE ROD



Sponge Rubber
Weatherstrip
Closed Cell

50 feet on a roll.
Sold by the roll.



1/4" Diameter Part# **AV4736**
3/8" Diameter Part# **AV4737**
1/2" Diameter Part# **AV4738**

CLOTH WINDLACE

Use around doors in older model cars to create a finished look.

Sewn over 1/2" sponge rod. | Sold by the yard.



Antique Grey | Black | Brick Red | Brown | Corral
Dark Grey | Forest | Grey | Maroon | Medium Blue
Navy | Palomino | Powder Blue | Red | Rust | Tan
Turquoise | White [Cream]

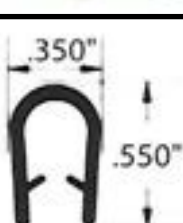
COMPACT WINDLACE



Use compact windlace to cover raw or rough edges of fiberglass or metal.

**snap on, pinch moulding, knock on trim*

Sold by the yard.



REGULAR



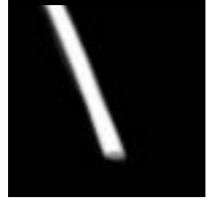
JUMBO

Regular Black Part# **COMBLACK**
Regular White Part# **COMWHITE**
Jumbo Black Part# **COMBLKJO**
Jumbo White Part# **COMWHITEJO**

POLYWELT



Firm, synthetic welt cord perfect for automotive and marine use.



Sold by the roll.

4/32" [500 Yard Roll]
5/32" [500 Yard Roll]
5/32" [1,000 Yard Roll]
6/32" [500 Yard Roll]

Part# **POLYWELT4**
Part# **POLYWELT5**
Part# **POLYWELT5-1**
Part# **POLYWELT6**

PVC WELT



Hollow core PVC welt is perfect for marine, auto, and weather-exposed jobs.

Sold by the roll.

3/32" PVC Welt is not hollow core.



3/32" [100 Yard Roll]
4/32" [100 Yard Roll]
4/32" [500 Yard Roll]
4/32" [750 Yard Roll]
5/32" [100 Yard Roll]
5/32" [500 Yard Roll]

Part# **PVC3**
Part# **PVC4**
Part# **PVC4-500**
Part# **PVC4-750**
Part# **PVC5-1**
Part# **PVC5**

TISSUE WELT



Tissue filled, braided fiber welt cord perfect for pillows, cushions, and more.

Sold by the roll.



4/32" [500 Yard Roll]
5/32" [500 Yard Roll]
5/32" [1,250 Yard Roll]
5/32" [2,000 Yard Roll]
6/32" [500 Yard Roll]

Part# **TISWELT4**
Part# **TISWELT5**
Part# **TISWELT5-1250**
Part# **TISWELT5-2**
Part# **TISWELT6**

DOUBLE WELT

4/32" [250 Yard Roll]
5/32" [250 Yard Roll]

Part# **TISWELT4-DW**
Part# **TISWELT5-DW**

SUPPLIES

COTTON WELT



Cotton welt offers great flexibility and softness perfect for slipcovers, pillow shames, and other furniture applications.

Sold by the roll.



8/32" [792 Yard Roll]
Part# **COTWELT8**

180 WELT



Use on seating to join two pieces of material together, providing a finished look to the final product.

Embossed Vinyl
Bead Size 180 [6/32"]
100 yards on a spool.
Sold by the yard.

Beige | Black | Bone | Brite Red | Brown | Buckskin
Burgundy | Camel | Charcoal | Dark Blue
Dark Gray | Dark Green | Firethorne | Graphite
Gray | Light Gray | Light Mocha | Maroon
Met Blue | Met Turquoise | Navy | Nutmeg
Off White | Tan | Titanium | White

TINSEL WELT



Extruded clear welt cord with a metallic tinsel wire in the middle.

0.125" Bead Size

250 yards on a roll.
Sold by the yard.

Gold Tinsel WELT Part# **GOLTIN**
Silver Tinsel WELT Part# **SILTIN**

MARINE WELT & HIDEM



Marine WELT is used on seating to join to pieces of material together, providing a finished look to the final product.

5/32" WELT Cord | 3/8" Flange
Seascape WELT is 25 yard rolls.
Seabrook WELT is 50 yard rolls.
Sold by the yard.



Split HIDEM is used on the bottom and backs of boat seats to hide staples.

3/4" Wide
25 yards on a roll. | Sold by the yard.

SEABROOK COLORS

Action Yellow | American Beauty | Stinger Bisque
Blue | Cantech White | Chalk | Stinger Cream
Deep Sea | Ebony | Forest | Gel White
Lite Glacier | Lime | Marble | Midnight
Moonlite | Nu Teal | Hot Orange | Porcelain
Purple | Ruby | Sea White | Sea Shell | White

SEASCAPE COLORS

Aqua | Autumn | Black | Bone | Buff | Chalk
Classic Blue | Cream | Cruiser Gray | Eggplant
Fern | Fire | Frost | Gray | Green | Lemon
Light Brown | Light Gray | Misty Gray | Mushroom
Navy | Off White | Orange | Pacific Blue
Pearl Gray | Pink | Red | Sand | Sand Dune
Seashell | Simply White | White | Wine | Yellow

AUTOMOTIVE SPLIT HIDEM



25 yards on a roll. | Sold by the yard.

Black Part# **SPHBLK**
Black Top Line Drill Part# **SPHBLKTL**
Royal Blue Part# **SPHRBLU**
White Part# **SPHWHITE**

GROMMETS

GROMMETS



BRASS

Use to make awnings, marine canvas, banners, drapery, and more.

Sold in 1 gross [144] bags.

BRASS GROMMETS & WASHERS

Size 00 [3/16" Diameter]	Part# G-100
Size 0 [1/4" Diameter]	Part# G-10
Size 1 [9/32" Diameter]	Part# G-11
Size 2 [3/8" Diameter]	Part# G-12
Size 3 [7/16" Diameter]	Part# G-13
Size 4 [1/2" Diameter]	Part# G-14
Size 5 [5/8" Diameter]	Part# G-15

NICKEL GROMMETS & WASHERS

Size 1 [9/32" Diameter]	Part# G-11NP
Size 2 [3/8" Diameter]	Part# G-12NP
Size 3 [7/16" Diameter]	Part# G-13NP



NICKEL

GROMMET KITS



Each kit includes an inserting die, hardwood block, hole cutter, and 3 dozen brass grommets.

Perfect for awnings, tents, sails, tarps, and more.

Sold by the each.

Size 0 [1/4" Diameter]	Part# K235-0
Size 1 [9/32" Diameter]	Part# K235-1
Size 2 [3/8" Diameter]	Part# K235-2
Size 3 [7/16" Diameter]	Part# K235-3
Size 4 [1/2" Diameter]	Part# K235-4
Size 5 [5/8" Diameter]	Part# K235-5

GROMMET DIES



Used to set plain rim washers and grommets.

Made from high grade tool steel.

Sold by the each.

Size 00 [3/16" Diameter]	Part# 216-00
Size 0 [1/4" Diameter]	Part# 216-0
Size 1 [9/32" Diameter]	Part# 216-1
Size 2 [3/8" Diameter]	Part# 216-2
Size 3 [7/16" Diameter]	Part# 216-3
Size 4 [1/2" Diameter]	Part# 216-4
Size 5 [5/8" Diameter]	Part# 216-5

GROMMET HOLE CUTTER

Used to create a hole where the grommet will be installed.

Sold by the each.



Size 00 [3/16" Diameter]	Part# 50000A
Size 0 [1/4" Diameter]	Part# 5000A
Size 1 [9/32" Diameter]	Part# 5001A
Size 2 [3/8" Diameter]	Part# 5002A
Size 3 [7/16" Diameter]	Part# 5003A
Size 4 [1/2" Diameter]	Part# 5004A
Size 5 [5/8" Diameter]	Part# 5005A

VENTILATORS



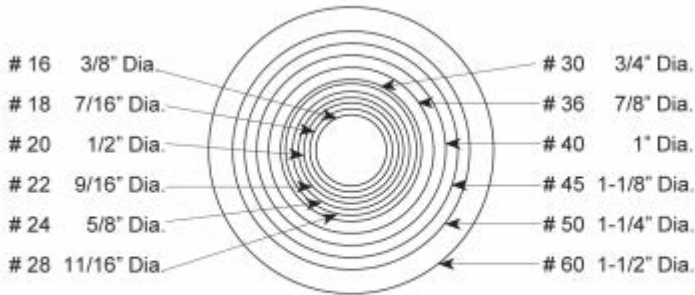
Used as breathers for mattresses, cushions, and plastic slip covers.

Sold in 1 gross [144] bags.
Tool is sold by the each.



3/4" Diameter	Part# V1-34
1" Diameter	Part# V11
3/4" Hand Setter	Part# V62134
1" Hand Setter	Part# V6211

BUTTONS



Button Chart - Actual sizes.

#9 WIRE EYE BUTTONS



Used for producing covered buttons. Features a heavy eye loop and will withstand an 80-pound pullout test.

Sold by the box.

Size 22 [9/16"] 1 Gross
 Size 22 [9/16"] 5 Gross
 Size 30 [3/4"] 1 Gross
 Size 30 [3/4"] 5 Gross
 Size 36 [7/8"] 1 Gross
 Size 36 [7/8"] 5 Gross
 Size 40 [1"] 1 Gross
 Size 40 [1"] 5 Gross
 Size 45 [1 1/8"] 1 Gross
 Size 45 [1 1/8"] 5 Gross
 Size 60 [1 1/2"] 1 Gross

Part# **22WE1**
 Part# **22WE**
 Part# **30WE1**
 Part# **30WE**
 Part# **36WE1G**
 Part# **36WE**
 Part# **40WE1GR**
 Part# **40WE**
 Part# **45WE1GR**
 Part# **45WE**
 Part# **60WE**

#44 WIRE EYE BUTTONS



Used for producing covered buttons. Features a 'U' shaped smaller loop that is intended to be used against delicate material to minimize piercing and runs.

Sold by the box.

Size 22 [9/16"] 5 Gross
 Size 30 [3/4"] 1 Gross
 Size 30 [3/4"] 5 Gross
 Size 36 [7/8"] 1 Gross
 Size 36 [7/8"] 5 Gross

Part# **22WE44**
 Part# **30WE441GR**
 Part# **30WE44**
 Part# **36WE441GR**
 Part# **36WE44**

PRONG BUTTONS



The use of prong buttons eliminates many operations common to twine tufting and requires no special skills or button dies.

Sold by the box.

Size 22 [9/16"] 1 Gross
 Size 22 [9/16"] 5 Gross
 Size 30 [3/4"] 1 Gross [2" Prong]
 Size 30 [3/4"] 5 Gross [2 1/2" Prong]
 Size 36 [7/8"] 1 Gross

Part# **22PRONG**
 Part# **22PRONG5GR**
 Part# **30PRONG**
 Part# **30PRONG2.5**
 Part# **36PRONG**



Washers
 Part# **PRONGWASHER**

TACK NAIL BUTTONS



These no-dent nails allow for a finished button to be tacked in place without denting the shell.

Sold by the box.

Size 22 [9/16"] 1 Gross
 Size 22 [9/16"] 5 Gross
 Size 30 [3/4"] 1 Gross
 Size 30 [3/4"] 5 Gross

Part# **22TNAIL1GR**
 Part# **22TNAIL**
 Part# **30TNAIL1GR**
 Part# **30TNAIL**

BUTTON SHELLS



Button Shells / Tops Only.
 Sold by the 1 gross box.

Size 30 [3/4"]
 Size 36 [7/8"]
 Size 40 [1"]
 Size 45 [1 1/8"]

Part# **30SHELLS**
 Part# **36SH1GR**
 Part# **40SHELLS**
 Part# **45SHELLS**

SUPPLIES

#9 BUTTON TWINE



Used for installing buttons and sewing down seats and decks.

Sold by the spool.

16oz Spool Part# **BUTTWI**

BUTTON MACHINE



Handy Junior #1
This machine is manually operated and allows the operator cover up to 90 buttons per hour.

Dies and cutters sold separately.

Part# **JR1**

BUTTON DIES & CUTTERS



These precision manufactured dies are the key to perfectly covered buttons. They can be used on a wide range of fabric types and thicknesses.

For use with the #1 Handy Button Machine.

Size 22	Part# 22DC
Size 30	Part# 30DC
Size 36	Part# 36DC
Size 40	Part# 40DC
Size 45	Part# 45DC
Size 60	Part# 60DC

BUTTON CUTTERS



The sharp, hardened steel cutters are available in multiple sizes to help you cut out the right size material to perfectly cover buttons.

For use with the #1 Handy Button Machine.

Size 22 Short Cutter	Part# 22SC
Size 30 Short Cutter	Part# 30SC
Size 36 Short Cutter	Part# 36SC
Size 40 Short Cutter	Part# 40SC
Size 45 Short Cutter	Part# 45SC
Size 45 Long Cutter	Part# 45LC
Size 50 Long Cutter	Part# 50LC
Size 60 Short Cutter	Part# 60SC

SEM GRIPTIDE



Use GripTide to create a non-skid surface on boat floors, boat decks, and other marine surfaces.

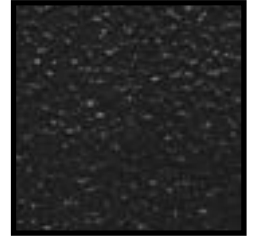
Each kit contains: 1 gallon GripTide Non-Skid Deck Coating; 1 cone quart GripTide Catalyst; 1 (9") Heavy



GULL GRAY



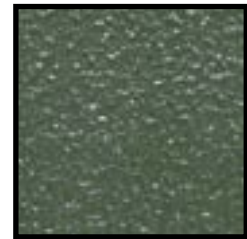
MATEO WHEAT



MIDNIGHT BLACK



SAIL WHITE



SPORTSMAN GREEN

SEM PREP & SUPPLIES

Use SEM Soap as the first step to clean vinyl, leather or plastic.

SEM Soap

Part# **SEM39362**

Use the Plastic & Leather Prep or the Vinyl Prep to clean the material before painting.

Plastic & Leather Prep

Part# **SEM38353**

Vinyl Prep

Part# **SEM38343**

Tac Free is a flexible satin top coat used to eliminate tackiness.

Tac Free

Part# **SEM39643**



SEM COLOR COAT



COLOR COAT AEROSOLS

*NOTE: 13013 SATIN GLOSS CLEAR MATCHES SHEEN OF ALL NON-GLOSS COLOR CHIPS



15003 PHANTOM WHITE



15013 LANDAU BLACK



15023 CORDOVAN BROWN



15033 SADDLE TAN



15043 SHADOW BLUE



15053 GRANITE



15063 BURGUNDY



15083 SILVER



15093 LT. BUCKSKIN



15103 SUPER WHITE



15113 FIRETHORN RED



15123 SANTA FE



15143 SANDSTONE



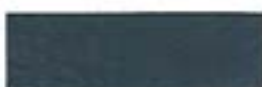
15163 PRESIDIO



15173 CAMEL



15183 WARM GRAY



15213 BLUEMIST



15223 CASTELLA



15233 GLOSS BLACK



15243 SATIN BLACK



15253 TITANIUM MET.



15273 NAPA RED



15283 PESCADERO SAND



15303 GRAPHITE



15313 WHITE



15323 PALOMINO



15353 LT. TITANIUM



15363 PORTOLA RED



15373 FLAME RED



15393 MEDIUM GRAY



15413 THOMAS BUS GRAY



15453 GLOSS WHITE



15483 BLUEBIRD BROWN



15603 SAILCLOTH WHITE



15643 PACIFIC BLUE



15713 LADERA



15723 MONTEREY



15753 LIGHT OAK



15763 STORM GRAY



15793 SHALE



15803 OPEL GRAY



15813 MED. DK. PEWTER



15823 LT. PARCHMENT



15833 KHAKI



15843 MED. PARCHMENT



15853 IVORY



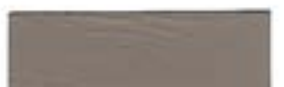
15863 LT. NEUTRAL



15873 MED. SLATE GRAY



15883 MED. NEUTRAL



15893 MED. PRAIRIE TAN

16oz cans.
12 cans in a case.
Sold by the can.

SEM CLASSIC COAT

CHANGE OR RENEW
COLOR ON MOST
VINYL & LEATHER

CLASSIC COAT™

SUPERIOR COLOR,
ADHESION &
FLEXIBILITY

AEROSOLS



Ford | ZUEA | **Midnight Black**
SEM No. 17013



Ford | ZUBA | **Light Graphite**
SEM No. 17023



Ford | BJAA | **Light Parchment**
SEM No. 17033



Ford | ZUCA | **Medium Graphite**
SEM No. 17043



Ford | BJCA | **Medium Parchment**
SEM No. 17053



Ford | AYCA | **Medium Prairie Tan**
SEM No. 17063



Ford | BJAA | **Medium Dark Graphite** - SEM No. 17073



Ford | ZUSA | **Dark Graphite**
SEM No. 17083



GM | 0848 | **Black**
SEM No. 17093



GM | 9780 | **Dark Gray**
SEM No. 17103



GM | 7701 | **Graphite**
SEM No. 17113



GM | 9781 | **Light Gray**
SEM No. 17123



GM | 9772 | **Light Neutral**
SEM No. 17133



GM | 101E | **Light Oak**
SEM No. 17143



GM | 110D | **Medium Dark Pewter**
SEM No. 17163



GM | 9779 | **Medium Gray**
SEM No. 17173



GM | 195A | **Medium Neutral**
SEM No. 17183



GM | 149B | **Shale**
SEM No. 17203



GM | 9902 | **Very Dark Gray**
SEM No. 17213



GM | 642H | **Very Dark Pewter**
SEM No. 17223



Chrysler | LS | **Taupe**
SEM No. 17243



Honda | N/A | **Classy Gray**
SEM No. 17263



Toyota | N/A | **Ivory**
SEM No. 17293



Acura | N/A | **Tan**
SEM No. 17313



Acura | N/A | **Creamy Ivory**
SEM No. 17323



BMW | N/A | **Silver Gray**
SEM No. 17353



Chrysler | D1 | **Light Graystone**
SEM No. 17363



Chrysler | DV | **Dark Slate Gray**
SEM No. 17373



Ford | 1TBA | **Medium Light Stone**
SEM No. 17383



Ford | 1TBA | **Light Stone**
SEM No. 17393



Ford | 4T1A | **Camel**
SEM No. 17403



GM | 830K | **Light Cashmere**
SEM No. 17413



GM | 830K | **Medium Cashmere**
SEM No. 17423



GM | 830K | **Very Dark Cashmere**
SEM No. 17433



N/A | N/A | **Lime Flat Black**
SEM No. 17503

16oz cans.
12 cans in a case.
Sold by the can.

SEM MARINE COAT

Ranger Off-White
M25073

Chaparral Beige/Platinum
M25143

Ultra Purple
M25003

Carver Black
M25213

Carver White
M25083

Stingray Taupe
M25153

Ultra Turquoise
M25013

Stingray Yellow
M25223

Sea Ray Mystic White
M25093

Ranger Beige
M25163

Ranger Orchid Green
M25023

Formula Boats Red
M25233

Sea Ray Alabaster
M25103

Ranger Charcoal
M25173

Ultra Blue
M25033

Stingray Burgundy
M25243

Sea Ray Champagne
M25113

Ranger Sunmetal Grey
M25183

Ranger Admiral Blue
M25043

Carver Dade Bisque
M25123

Light Grey
M25193

Ranger Black
M25053

Carver Light Tan
M25133

Formula Boats Grey
M25203

Ranger White
M25063

16oz cans.
12 cans in a case.
Sold by the can.

FASTENERS

SNAP FASTENERS

A cost-effective fastener for products such as boat covers, outdoor furniture, and light-duty automotive trim.

All parts are 100 in a box. | Sold by the box.



BUTTONS

BUTTONS

Nickel Plated Brass

5/16" Post

1/4" Post

Military Black

1/4" Post

Enamel Black

1/4" Post

Stainless Steel

5/16" Post

1/4" Post

SOCKETS

Nickel

Military Black

Stainless Steel



SOCKETS

Part# **VL10127**

Part# **VL10128**

Part# **VL10128MB**

Part# **VL10128BLK**

Part# **VL30027**

Part# **VL30028**



EYELETS

EYELETS

Nickel Plated Brass

5/16" Post

1/4" Post

Military Black

1/4" Post

Stainless Steel

1/4" Post

STUDS

Nickel

Military Black

Stainless Steel



STUDS

Part# **VL10413**

Part# **VL10412**

Part# **VL10412MB**

Part# **VL30014**

Part# **VL10370**

Part# **VL10370MB**

Part# **VL30070**

SNAP FASTENER SET



Each set contains:

- 25 Buttons
- 25 Sockets
- 25 Studs
- 25 Eyelets

Standard 1/4" Length
Nickel Plated Brass

Part# **VLBSCE**

BABY SNAP FASTENERS



Provides the same strength
as regular fasteners without
being visually prominent on
the final product.

Nickel Plated Brass
100 pieces in a box.
Sold by the box.

Part# **VL12105**

Part# **VL12205**

Part# **VL12303**

Part# **VL12402**

Buttons

Sockets

Eyelets

Studs

WINDSHIELD CLIPS



3/4" Clip
Part# **VL10388**



7/8" Clip
Part# **VL10391**

Sold by the each.

DURASNAPS



Designed to snap onto
durable studs and screw
studs when covered.

Size 30 [3/4"]

Sold in 1 gross boxes.

Part# **30DURASNAP**

GYPSY DOUBLE STUD



Nickel Plated Brass
11/64" Barrel
100 studs in a box.
Sold by the box.

Part# **VL10342**

FASTENERS

FLANGELESS STUD



Most commonly used on convertible tops. Use a rivet or screw to attach.

For use with VL10128 & VL10224.

100 pieces in a box.

Sold by the box. Part# **VL10373**

DEEP STUD



Nickel Plated Brass

Low Base

100 studs in a box. Sold by the box.

Part# **VL10379**

SCREW STUDS



Designed for use with durable fasteners.

100 pieces in a box.
Sold by the box.

STAINLESS STEEL HEAD [Stainless Steel Coated Post]

3/8" Long

Part# **VL1039312**

5/8" Long

Part# **VL1039320**

1" Long

Part# **VL1039325**

100% STAINLESS STEEL

3/8" Long

Part# **VL30012**

5/8" Long

Part# **VL30020**

PUNCH & DIE KIT

Includes a hard plastic die, a chrome plated hardened steel punch, and a half dozen snap fasteners.



Part# **PUNCHDIE**

PRESS-N-SNAP TOOL



This easy to use tool helps you install snaps and grommets.

Comes complete with a set of snap dies and #1 grommet dies.

Part# **PRESSSNAP**

PRESS-N-SNAP DIES

Sold by the each.



Button Die
Part# **PSBUDIE**



Eyelet Die
Part# **PSEYDIE**



Socket Die
Part# **PSSODIE**



Stud Die
Part# **PSSTDIE**

Grommet Dies



Size 00

Part# **PSGROMMET00**

Size 0

Part# **PSGROMMET0**

Size 1

Part# **PSGROMMET1**

Size 2

Part# **PSGROMMET2**

Size 3

Part# **PSGROMMET3**

PRESS-N-SNAP O RINGS



Gray Ring
Part# **PSM2700**



Small O Ring
Part# **PS6227-5**



Large O Ring
Part# **PS12**

PRESS-N-SNAP PARTS



Other parts available online or for special order only.

Handle

Part# **PSHANDLE**

Lever

Part# **PSLEVER**

Nut & Bolt

Part# **PSNUTBOLT**

Spring

Part# **PSSPRING**

Adjusting Bolt

Part# **PSADBOLT**

Baby Fastener Die

Part# **PSBABYDIE**

FASTENERS

COMMON SENSE FASTENERS

Typically found on boats, these fasteners are also good for boom covers, awnings, and tarps. All parts are sold by the each.



EYELET

Use in combination with V400A washers.

Part# **V400**



WASHER

Use in combination with V400 eyelets.

Part# **V400A**



TURNBUCKLE TWO SCREW BASE

Part# **V401**



TURNBUCKLE DOUBLE TWO SCREW BASE

Part# **VL78323**



SINGLE TWO PRONG CLINCH STUD

Use in combination with VL78507 clinch plate.

Part# **VL78332**



CLINCH PLATE

Use in combination with VL78332 clinch stud.

Part# **VL78507**



TURNBUCKLE BARREL STUD

Part# **VL78317**



TURNBUCKLE SCREW STUD

#12 Steel Self Tapping Screw
5/8" Long

Part# **VL78315**



TURNBUCKLE WOOD SCREW

#7 Brass Wood Screw
5/8" Long

Part# **VL78324**



CUTTING PUNCH

For cutting the center hole and four small slits for the eyelet prongs [V400]

Part# **V450**

ONE WAY PULL FASTENERS

One-Way fasteners withstand extreme pressure from three sides without unlocking. They are suitable for harsh environments where a heavy-duty fastener is needed. All parts are sold by the each.



BUTTONS

1/4" Barrel

Part# **VL18100**



SOCKETS

Part# **VL18201**



STUDS

5/16"

Part# **VL18303**

Visit www.albrightssupply.com for more products, information, tools, pricing, and real-time inventory!

FASTENERS

LIFT THE DOT FASTENERS

Lift the Dot fasteners are perfect for automotive and marine use as well as on tents and awnings. All parts are sold by the each.



CURTAIN WASHER

Use in combination with VL16349 clinch studs.

Part# **VL16501**



TWO PRONG CLINCH STUD

Use in combination with VL16501 curtain washers.

Part# **VL16349**



SOCKET

Standard 7/32" leg
Use in combination with VL16506 clinch plates.

Part# **VL16205**



SOCKET

Long 9/32" leg
Use in combination with VL16506 clinch plates.

Part# **VL16206**



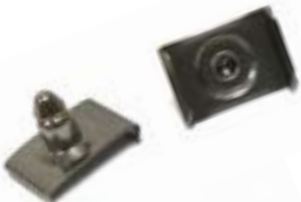
EYELET TYPE STUD

Nickel Plated Brass

Part# **VL16358**

Military Black

Part# **VL16358MB**



WINDSHIELD CLIP

3/4"

Part# **VL16376**

7/8"

Part# **VL16377**



CUTTING PUNCH

For cutting the center hole and four small slits for the socket prongs [VL16205 & VL16206]

Part# **V9951**



CURTAIN STUD W/ MACHINE SCREW

#8-32 Machine Screw
3/8" Long

Part# **VL16362**



CURTAIN STUD W/ WOOD SCREW

#8 Wood Screw
1/2" Long

Part# **VL16360-16**



CLINCH PLATE

Use in combination with VL16205 or VL16206 sockets.

Part# **VL16506**



RIVET TYPE WASHERS

Part# **VL16509**

TEENUTS



Used in marine and furniture applications to provide an internally threaded surface for screws and bolts.

Sold by the box.

LOW CARBON STEEL

[50 PIECES IN A BOX]

1/4"-20 x 7/16" 4 Prong

5/16"-18 x 3/8" 6 Prong

5/16"-18 x 5/8" 4 Prong

Part# **AV10730**

Part# **AV10731**

Part# **AV10731B**

LOW CARBON STEEL

[25 PIECES IN A BOX]

3/8"-16 x 7/16" 6 Prong

Part# **AV10732**

STAINLESS STEEL

[25 PIECES IN A BOX]

1/4"-20 x 5/16" 4 Prong

Part# **AV17013**

FASTENERS

PAN'L BLIND RIVET



Aluminum
1/8" Diameter
3/16" to 1/4" Grip Range

1,000 pieces in a box.
Sold by the box.

Part# **AV8927**

REAR QUARTER STRIP TRIM

FASTENER



Ford & Chrysler
Metal

50 pieces in a box.
Part# **AV1256**

BLIND RIVET



Aluminum
1/8" Diameter
3/8" to 1/2" Grip Range

100 pieces in a box.
Sold by the box.

Part# **AV16032**

TRIM PANEL FASTENER



Chrysler
1/2" Head Diameter

100 pieces in a box.
Part# **AV807**

RIVET WASHERS



For use with 1/8" rivets.
Steel

100 pieces in a box.
Sold by the box.

Part# **AV16791**

TRIM PANEL FASTENER



Chrysler
1/2" Head Diameter

100 pieces in a box.
Part# **AV808**

DOOR TRIM PANEL FASTENER



Ford & Chrysler
100 pieces in a box.
Part# **AV9361**

DOOR TRIM PANEL FASTENER



All cars with 0.125" panels.
Ford
Copper Metal

100 pieces in a box.
Part# **AV2309**

DOOR TRIM PANEL FASTENER



Chrysler
Metal
100 pieces in a box.
Part# **AV2310**

DOOR TRIM PANEL FASTENER



Ford
Phosphate

50 pieces in a box.
Part# **AV11863**
100 pieces in a box.
Part# **AV10780**

FASTENERS & RETAINERS

DOOR TRIM PANEL FASTENER



Ford

100 pieces in a box.
Part# **AV8206**

TRIM CLIP FASTENER



1/2" Head Diameter
1/4" Hole Size

Metal
100 pieces in a box.
Part# **AV11406**

TRIM & GARNISH RETAINER



Ford Vans 1992-On

1" Head Diameter
5/16" Stem Diameter
1 3/4" Stem Length

Black Nylon
25 pieces in a box.
Part# **AV19846**

TRIM PANEL RETAINER



GM Trucks 1981-On

1" Head Diameter
9/32" Stem Diameter
1 7/16" Stem Length

Black Nylon
25 pieces in a box.
Part# **AV12759**

TRIM & GARNISH RETAINER



GM Acadia, Camaro,
Enclave, Traverse, & Saturn
Outlook 2008-On

25.4mm [1"] Head Diameter
8mm [0.31"] Stem Diameter
27mm [1.06"] Stem Length

Black Nylon
25 pieces in a box.
Part# **AV21338**

FENDER FLARE RETAINER



Ford Expedition, Lincoln
Navigator 2003-On

18mm [0.71"] Head Diameter
7.5mm [0.29"] Stem Diameter
33mm [1.29"] Stem Length

Black Nylon
25 pieces in a box.
Part# **AV20624**

BUMPER FASCIA RETAINER



Buick, Cadillac, & Olds
1981-On
Ford Taurus, Mercury Sable
1986-On

22mm [0.87"] Head Diameter
11mm [0.43"] Stem Diameter
28mm [1.1"] Stem Length

Black Nylon
50 pieces in a box.
Part# **AV15478**

FASCIA RETAINER



Chrysler 1988-On
GM 1989-On

7/8" Head Diameter
5/16" Stem Diameter
1 3/32" Stem Length

Black Nylon
50 pieces in a box.
Part# **AV15543**

TRIM PANEL RETAINER



Ford 1980-On

1" Head Diameter
9/32" Stem Diameter
1 1/16" Stem Length

Black Nylon
50 pieces in a box.
Part# **AV12909**

RETAINERS

DOOR PANEL RETAINER



Ford, Chrysler, VW
1975-On

15/16" Head Diameter
5/16" Stem Diameter
1 1/16" Stem Length

Black Nylon
25 pieces in a box.
Part# **AV11351**

SHIELD PANEL RETAINER



GM 1989-On

1 1/16" Head Diameter
5/16" Stem Diameter
1 1/16" Stem Length

Black Nylon
50 pieces in a box.
Part# **AV17664**

REAR HOOD SEAL RETAINER



GM 1983-On

3/4" Head Diameter
5/16" Stem Diameter
1 3/8" Stem Length

Black Nylon
25 pieces in a box.
Part# **AV14036**

HEADLINER PANEL RETAINER



GM 1992-On

1 1/32" Head Diameter
9/32" Stem Diameter
1 3/32" Stem Length

Gray Nylon
50 pieces in a box.
Part# **AV18688**

PANEL RETAINER



GM, Ford, Chrysler

1 1/16" Head Diameter
5/16" Stem Diameter
1 3/16" Stem Length

Black Nylon
100 pieces in a box.
Part# **AV15414**

BUMPER SHIELD RETAINER



GM, Ford, Chrysler

1 1/16" Head Diameter
5/16" Stem Diameter
1 3/16" Stem Length

Black Nylon
25 pieces in a box.
Part# **AV11146**

TRIM PANEL RETAINER



Ford 1986-On

26mm [1.02"] Head Diameter
8mm [0.31"] Stem Diameter
38mm [1.49"] Stem Length

Black Nylon
25 pieces in a box.
Part# **AV15479**

PANEL RETAINER



GM 1985-On

1 9/32" Head Diameter
7/32" Stem Diameter
3/4" Stem Length

Black Nylon
50 pieces in a box.
Part# **AV15367**

Dodge Daytona 1993

1" Head Diameter
1 9/64" Stem Diameter
1 1/16" Stem Length

Black Nylon
25 pieces in a box.
Part# **AV18771**

PANEL RETAINER



RETAINERS

HEADLINER RETAINER



GM Trucks 1994-On

3/4" Head Diameter
5/16" Stem Diameter
1 1/16" Stem Length

Black Nylon
50 pieces in a box.
Part# **AV19834**

WEATHERSTRIP RETAINER



GM, Ford, AMC

7/16" Head Diameter
3/16" Stem Diameter
5/8" Stem Length

Black Nylon
50 pieces in a box.
Part# **AV11612**

TRIM PANEL RETAINER



Ford 1985-On

1/2" Top Head Diameter
3/4" Btm Head Diameter
11/32" Stem Diameter
3/4" Stem Length

Black Nylon
50 pieces in a box.
Part# **AV17124**

DOOR TRIM PANEL RETAINER



Ford 1981-On

1/2" Top Head Diameter
25/32" Btm Head Diameter
5/16" Stem Diameter
5/8" Stem Length

Black Nylon
25 pieces in a box.
Part# **AV12565**

COWL SIDE TRIM RETAINER



Ford T-Bird, Mercury Cougar
1989-On

1" Head Diameter
1/4" x 5/16" Stem Diameter
1 1/18" Stem Length

Black Nylon
25 pieces in a box.
Part# **AV15523**

SEAT BACK RETAINER

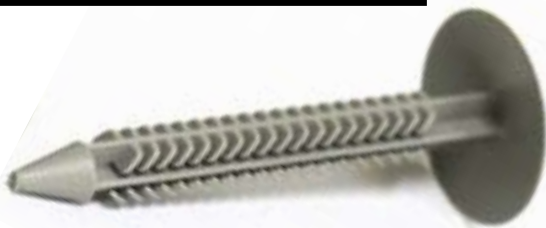


GM Camaro 1982-On

25/32" Head Diameter
5/16" Stem Diameter
15/16" Stem Length

Black Nylon
25 pieces in a box.
Part# **AV12731**

HEADLINER RETAINER



Chevrolet Silverado Hybrid 2010-On

25mm [0.98"] Head Diameter
8mm [0.31"] Stem Diameter
58mm [2.28"] Stem Length

Opal Gray Nylon
25 pieces in a box.
Part# **AV21287**

BUMPER FASCIA RETAINER



GM 1993-On

3/4" Head Diameter
11/32" Stem Diameter
1 3/16" Stem Length

Black Nylon
25 pieces in a box.
Part# **AV18301**

Visit www.albrightsupply.com for more products, information, tools, pricing, and real-time inventory!

Follow us on Facebook, Instagram, and Twitter.

RETAINERS

TRIM & GARNISH RETAINER



Ford Ranger 1992-On

1" Head Diameter
5/16" Stem Diameter
1 1/2" Stem Length

Gray Nylon
25 pieces in a box.
Part# **AV18277**

DOOR TRIM PANEL RETAINER



GM 1978-On

29/32" Top Head Diameter
7/8" Btm Head Diameter
5/16" Stem Diameter
3/4" Stem Length

White Nylon
50 pieces in a box.
Part# **AV11796**

TRIM PANEL RETAINER



Ford 1977-On

1/2" Top Head Diameter
3/4" Btm Head Diameter
11/32" Stem Diameter
9/16" Stem Length

White Nylon
50 pieces in a box.
Part# **AV11797**

TRIM PANEL RETAINER



Ford 1976-On

29/32" Top Head Diameter
15/16" Btm Head Diameter
5/16" Stem Diameter
15/16" Stem Length

White Nylon
25 pieces in a box.
Part# **AV11672**

DOOR TRIM PANEL RETAINER



GM 1991-On

13mm [0.51"] Top Hd Diameter
20mm [0.78"] Btm Hd Diameter
8mm [0.31"] Stem Diameter
18mm [0.71"] Stem Length

White Nylon
50 pieces in a box.
Part# **AV17218**

TRIM PANEL RETAINER



GM 1983-On

9/32" x 19/32" Top Hd Diameter
3/4" x 7/8" Btm Hd Diameter
5/16" Stem Diameter
3/4" Stem Length

White Nylon
25 pieces in a box.
Part# **AV12992**

TRIM PANEL RETAINER



Chevy Truck & GMC 1976-On

5/8" Top Head Diameter
3/4" Bottom Head Diameter
5/16" Stem Diameter
1" Stem Length

White Nylon
50 pieces in a box.
Part# **AV15461**

TRIM PANEL RETAINER



GM 1971-On

11/16" Top Head Diameter
3/4" Btm Head Diameter
5/16" Stem Diameter
1/2" Stem Length

White Nylon
50 pieces in a box.
Part# **AV10621**

RETAINERS

TRIM PANEL RETAINER



Camaro, Firebird 1982-On
GM Truck 1989-On

21/32" Top Head Diameter
3/4" Btm Head Diameter
5/16" Stem Diameter
3/4" Stem Length

White Nylon
50 pieces in a box.
Part# **AV12737**

TRIM PANEL RETAINER



GM 1971-On

11/16" Top Head Diameter
3/4" Btm Head Diameter
5/16" Stem Diameter
1/2" Stem Length

White Nylon
50 pieces in a box.
Part# **AV11774**

TRIM PANEL RETAINER



GM 1987-On

29/32" Top Head Diameter
15/16" Btm Head Diameter
5/16" Stem Diameter
1 1/4" Stem Length

White Nylon
50 pieces in a box.
Part# **AV15669**

DOOR TRIM PANEL RETAINER



GM Astro, Safari 1985-On

9/32 x 19/32" Top Hd Diameter
3/4" x 7/8" Btm Hd Diameter
5/16" Stem Diameter
3/4" Stem Length

Yellow Nylon
25 pieces in a box.
Part# **AV13946**

TRIM PANEL RETAINER



GM

29/32" Top Head Diameter
15/16" Btm Head Diameter
5/16" Stem Diameter
1 1/8" Stem Length

White Nylon
25 pieces in a box.
Part# **AV13461**

TRIM PANEL RETAINER



Honda 1990-On

13mm [0.51"] Top Hd Diameter
18mm [0.71"] Btm Hd Diameter
10.5mm [0.41"] Stem Diameter
14mm [0.55"] Stem Length

White Nylon
15 pieces in a box.
Part# **AV18294**

TRIM PANEL RETAINER



GM, Chrysler, VW 1976-On

29/32" Top Head Diameter
15/16" Btm Head Diameter
5/16" Stem Diameter
11/16" Stem Length

White Nylon
25 pieces in a box.
Part# **AV11678**

TRIM PANEL RETAINER



Saturn Ion 2003-On

14mm [0.55"] Top Hd Diameter
17mm [0.66"] Btm Hd Diameter
9.5mm [0.37"] Stem Diameter
14mm [0.55"] Stem Length

White Nylon
50 pieces in a box.
Part# **AV21088**

RETAINERS

PUSH TYPE RETAINER



GM 1970-On
Chrysler 1968-On

1 1/16" Head Diameter
5/8" Stem Length
Fits into 1/4" hole.

Black Nylon
50 pieces in a box.
Part# **AV11699**

PUSH TYPE TRIM RETAINER



GM 1982-On
Ford 1986-On
Chrysler 1998-On

1 1/16" Head Diameter
7/8" Stem Length
Fits into 1/4" hole.

Black Nylon
25 pieces in a box.
Part# **AV14753**

TRIM PANEL PUSH TYPE RETAINER



Ford Mustang 2005-On

18mm [0.71"] Head Diameter
10mm [0.39"] Stem Length
Fits into 6mm [0.24"] hole.

Black Nylon
15 pieces in a box.
Part# **AV21024**

PUSH TYPE TRIM PANEL RETAINER



GM Trucks 1995-On

9/16" Head Diameter
41/64" Stem Length
Fits into 1/4" hole.

White Nylon
50 pieces in a box.
Part# **AV18353**

PUSH TYPE RETAINER



GM 2007-On

19mm [0.75"] Head Diameter
16mm [0.63"] Stem Length
Fits into 8mm [0.31"] hole.

5mm-7mm [0.19"-0.27"] panel
range.

Black Nylon
25 pieces in a box.
Part# **AV20990**

DOUBLE END RETAINER



1/2" Head Diameter
1 1/32" Stem Diameter
7/16" & 7/8" Stem Length

White Nylon
25 pieces in a box.
Part# **AV20866**

BUMPER FASCIA PUSH TYPE RETAINER



GM 1996-On

20mm [0.78"] Head Diameter
28mm [1.10"] Stem Length
Fits into 8mm [0.31"] hole.

Black Nylon
25 pieces in a box.
Part# **AV18896**

RADIATOR GRILLE RETAINER



GM S10 & S15 1991-On

3/4" Head Diameter
9/32" x 1 1/32" Stem Diameter
1 1/16" Stem Length

Black Nylon
25 pieces in a box.
Part# **AV17599**

Visit www.albrightssupply.com for more products,
information, tools, pricing, and real-time inventory!

Follow us on Facebook, Instagram, and Twitter.

CLIPS

GARNISH MOULDING CLIP



Windshield Upper Garnish Moulding Clip

GM A & G Models
1978-1988

Black Nylon
10 pieces in a box.
Part# **AV18398**

ROCKER PANEL MOULDING CLIP



Chevrolet Malibu 2004-On

3/4" x 1 1/32" Top Head Size
1 9/32" x 1 1/32" Btm Head Size
9/16" Stem Length | Fits into 3/8" hole.

White Nylon | 15 pieces in a box.
Part# **AV20972**

GARNISH MOULDING CLIP



GM 1978-On

White Nylon
25 pieces in a box.
Part# **AV16865**

ROCKER PANEL MOULDING CLIP



Chevrolet Impala, Lumina, Monte Carlo 2000-On

1 5/32" x 1 9/32" Head Size
1 1/16" Stem Length
Fits into 5/16" hole.

Maroon Nylon | 10 pieces in a box.
Part# **AV20974**

FENDER MOULDING CLIP



Ford Explorer & Others 2005-On

15mm [0.59"] x 51mm [2"] Hd Size
11mm [0.43"] Stem Length
Fits into 8mm [0.31"] hole.

White Nylon | 15 pieces in a box.
Part# **AV21000**

ROCKER PANEL MOULDING CLIP



Chevrolet Impala, Lumina, Monte Carlo 2000-On

1 1/16" x 1 5/16" Head Size
1 1/16" Stem Length
Fits into 5/16" hole.

Tan Nylon | 15 pieces in a box.
Part# **AV20973**

CAPPED PANEL FASTENER



General Purpose Clips
Brown

1 7/32" Head Diameter
1 17/64" Stem Length
9/32" Hole Size
7/16" Diamond Width

100 pieces in a box.
Part# **AV1202**

CAPPED TRIM FASTENER

Brown

1 7/32" Head Diameter
7/8" Prong Length
9/32" Hole Size
1/2" Diamond Width

100 pieces in a box.
Part# **AV5961**



CLIPS

MOULDING CLIP



GM 1980-On

Quarter Belt Reveal
Moulding Clip

Nylon
50 pieces in a box.
Part# **AV12563**

MOULDING CLIP



GM 1980-On

Nylon
25 pieces in a box.
Part# **AV12602**

MOULDING CLIP



GM 1970-On

Door, Quarter Panel, &
Rear End Moulding Clip

Nylon
50 pieces in a box.
Part# **AV10617**

MOULDING CLIP



GM 1980-On

Quarter Belt Reveal
Moulding Clip
7/16" Wide
31/32" Long

White Nylon
50 pieces in a box.
Part# **AV14642**

MOULDING CLIP



GM 1980-On

Nylon
25 pieces in a box.
Part# **AV12594**

MOULDING FASTENER



GM

Front & Rear Fender & Door
Peak Moulding Fastener

3/8" Hole Size
1 1/4" Across Flats

Black Metal
15 pieces in a box.
Part# **AV12966**

MOULDING FASTENER



Universal

#10-24 x 3/4" Bolt
1" Plate Length
1/2" Plate Width

25 pieces in a box.
Part# **AV19626**

MOULDING CLIP



Chrysler 1976-On

Nylon
25 pieces in a box.
Part# **AV11354**

LANDAU TOP MOULDING CLIP



Natural Nylon
100 pieces in a box.
Part# **AV9850**

HEADLINER CLIPS



GM 1973-On

Headliner, Roof, Inner Side,
Front, Rear, & Panel Clip

Nylon | 10 pieces in a box.
Part# **AV11118**

CLIPS

RETAINING RINGS



Reinforced E Type
Retaining Rings

100 pieces in a box.

7/16" Shaft Diameter
1/2" Shaft Diameter

Part# **AV2672**
Part# **AV8837**

FLAT PUSH-ON RETAINER



For non-threaded fasteners.
Zinc
100 pieces in a box.

For 1/8" Stud
For 1/2" Stud

Part# **AV8863**
Part# **AV10375**

HINGE PIN RETAINER



GM

Front Seat Arm Support
Hinge Pin Retainer

Metal
100 pieces in a box.
Part# **AV9367**

DOOR HANDLE RETAINING CLIPS



GM, Ford, Toyota

Door & Window Crank
Handle Retaining Clip

Zinc
100 pieces in a box.
Part# **AV2288**



GM

Door & Window Crank
Handle Retaining Clip

Coppered Spring Steel
100 pieces in a box.
Part# **AV11**

TRIM PANEL FASTENER



Chrysler
Fits in 5/16" hole.

Zinc
50 pieces in a box.
Part# **AV12134**

DOOR PANEL REPAIR CLIP



GM

Slips on door panel
fastener strip for repairs
to replace broken nails
in panel edging.

3/4" Nail

50 pieces in a box.
Part# **AV12671**

SEAT CUSHION UPHOLSTERY CLIP



Can also be used to
repair drooping
headliners in Hondas.

Metal
500 pieces in a box.
Part# **AV7578**

SEAT COVER CLIP



GM 1978-On

Zinc
100 pieces in a box.
Part# **AV11795**

UPHOLSTERY CLIPS



GM 1979-On

Zinc
50 pieces in a box.
Part# **AV12069**

CLIPS

SPRING TYPE U NUTS



For #8 Screw Size
0.025-0.125" Panel Range
3/8" Center of Hole to Edge

Phosphate | 25 pieces in a box.
Part# **AV10065**



For #8 Screw Size
0.025-0.150" Panel Range
5/8" Center of Hole to Edge

Phosphate | 100 pieces in a box.
Part# **AV9879**

FLAT NUTS



Phosphate | 100 pieces in a box.

For #6-32 Machine Screw
5/16" x 1/2"
Part# **AV2089**

For #8 Screw
13/32" x 5/8"
Part# **AV5563**

U TYPE SNAP ON TRIM CLIPS



**Header Clips*

0.060" - 0.090"
Panel Range
Metal
100 pieces in a box.
Part# **AV9416**



0.105" - 0.115"
Panel Range
Metal
100 pieces in a box.
Part# **AV9417**

WINDSHIELD / WINDOW REVEAL MOULDING CLIPS



Ford 1966-On
Windshield & Rear Window
Reveal Moulding Clip

Metal | 100 pieces in a box.
Part# **AV8941**



GM 1970-On
Windshield & Rear Window
Reveal Moulding Clip

Metal | 50 pieces in a box.
Part# **AV10630**



GM 1970-On
Windshield Reveal
Moulding Clip

Metal | 50 pieces in a box.
Part# **AV10631**



GM 1969-On
Rear Window Reveal
Moulding Clip

Metal | 100 pieces in a box.
Part# **AV10243**

FOOTMAN LOOPS



Anchoring bars typically fastened on boats or trailers to create a connection point for a strap or loop.

For use with a 2" strap.
1/4" Hole Size
3 1/8" Hole Center to Hole Center
3 21/32" Overall Size

Steel with Nickel Finish
25 pieces in a box.
Part# **AV19401**

SCREWS

PHILLIPS OVAL HEAD TAPPING SCREWS

100 screws in a box.



ZINC



CHROME



BLACK

SIZE	HEAD SIZE	ZINC	CHROME	BLACK
#4 x 1/2"			3068	
#4 x 3/4"			3069	
#6 x 3/8"	#4		2802	
#6 x 1/2"		2571	2698	
#6 x 5/8"			1793	
#6 x 3/4"			1794	
#6 x 1"			1796	
#6 x 1 1/4"			1797	
#8 x 3/8"	#6		2024	
#8 x 1/2"			2707	10163
#8 x 1/2"	#6	2706	2027	10166
#8 x 5/8"			2709	
#8 x 3/4"			2710	10165
#8 x 3/4"	#6	1798		
#8 x 7/8"		2575		
#8 x 7/8"	#6		2711	
#8 x 1"		2360	2713	10167
#8 x 1"	#6		1483	10166
#8 x 1 1/4"		2361	2716	10169
#8 x 1 1/4"	#6		1423	10168
#8 x 1 1/2"		2362	2718	10171
#8 x 1 1/2"	#6	2717	1932	10170
#8 x 2"		2633		
#10 x 1/2"		2579		
#10 x 5/8"	#8		2724	
#10 x 3/4"		2581		11086
#10 x 3/4"	#8		1717	11087
#10 x 1"		2582		
#10 x 1"	#8	2578	2730	
#10 x 1 1/4"		2583		
#10 x 1 1/4"	#8		2734	
#10 x 1 1/2"		2585		
#10 x 1 1/2"	#8		20374	

SCREWS

PHILLIPS OVAL HD SEMS

TAPPING SCREWS

100 screws in a box.



WITH COUNTERSUNK WASHERS

CHROME

#8 x 5/8"	Part# AV2771
#8 x 3/4"	Part# AV2751
#8 x 1"	Part# AV2772
#8 x 1 1/4"	Part# AV2773
#8 x 1 1/2" [#6 Head]	Part# AV14970
#10 x 3/4" [#8 Head]	Part# AV3466
#10 x 1" [#8 Head]	Part# AV3467

WITH COUNTERSUNK WASHERS

BLACK

#8 x 5/8" [#6 Head]	Part# AV11787
#8 x 3/4" [#6 Head]	Part# AV11788
#8 x 1" [#6 Head]	Part# AV11789
#8 x 1 1/4" [#6 Head]	Part# AV11790
#10 x 5/8" [#8 Head]	Part# AV14972
#10 x 3/4" [#8 Head]	Part# AV11791



WITH FLUSH WASHERS

CHROME

#8 x 5/8"	Part# AV2774
#8 x 7/8"	Part# AV2775

WITH FLUSH WASHERS

BLACK

#8 x 1/2" [#6 Head]	Part# AV12956
#8 x 1" [#6 Head]	Part# AV12957

PHILLIPS PAN HEAD MACHINE

SCREWS

Zinc
50 screws in a box.



1/4-20 x 1 1/4"
Part# **AV15401**

1/4-20 x 1 1/2"
Part# **AV15402**

PHILLIPS OVAL HD SEMS TEK

SCREWS

#2 Drill Point

100 screws in a box unless otherwise noted.



WITH COUNTERSUNK WASHERS

CHROME

#8-18 x 5/8" [#6 Head]	Part# AV11449
#8-18 x 3/4" [#6 Head]	Part# AV11450
#8-18 x 1" [#6 Head] 50 ct box	Part# AV11451
#8-18 x 1 1/4" [#6 Head] 50 ct box	Part# AV11452

WITH COUNTERSUNK WASHERS

BLACK

#8-18 x 1" [#6 Head] 50 ct box	Part# AV11456
--------------------------------	----------------------



WITH FLUSH WASHERS

CHROME

#8-18 x 5/8" [#6 Head]	Part# AV11448
------------------------	----------------------

WITH FLUSH WASHERS

BLACK

#8-18 x 5/8" [#6 Head] 50 ct box	Part# AV11453
----------------------------------	----------------------

PHILLIPS PAN HEAD TAPPING

SCREWS



100 screws in a box.

BLACK

#4 x 1/4"	Part# AV12902
#8 x 1/2"	Part# AV10180
#8 x 3/4"	Part# AV10181
#8 x 1"	Part# AV10182
#10 x 3/4"	Part# AV11922
#10 x 1"	Part# AV11923

ZINC

#8 x 1/2"	Part# AV1940
#8 x 3/4"	Part# AV2365
#8 x 1"	Part# AV3079
#8 x 1 1/2"	Part# AV3081

STAINLESS STEEL

#6 x 3/4"	Part# AV13266
#6 x 1 1/4"	Part# AV13268

SCREWS & WASHERS

WASHERS



FLUSH WASHERS

Nickel Plated

#6 [100 pcs] Part# **AV602**
#6 [1,000 pcs] Part# **AV7624**
#8 [100 pcs] Part# **AV604**



COUNTERSUNK WASHERS

Nickel Plated

#4 [100 pcs] Part# **AV612**
#6 [100 pcs] Part# **AV614**
#8 [100 pcs] Part# **AV616**



COUNTERSUNK WASHERS

Black

#8 [100 pcs] Part# **AV16012**



FLANGED COUNTERSUNK WASHERS

Nickel Plated

#8 [100 pcs] Part# **AV2515**
#10 [100 pcs] Part# **AV3471**



FLANGED COUNTERSUNK WASHERS

Stainless Steel

#8 [100 pcs] Part# **AV2597**

POP ON SCREW COVERS



Fits #8 Screws.
50 pieces in a box.

**Screws not included.*

Black Covers
White Covers
Bases

Part# **AV13835**
Part# **AV13836**
Part# **AV13841**

PHILLIPS OVAL HEAD TAPPING

SCREWS



#8 x 1 1/2"
Stainless
Steel

100 screws in a box.
Part# **AV9407**

PHILLIPS WASHER HD TAPPING

SCREWS



Teks Point
#8 x 1/2"
7/16" Washer Hd Outer Dia.

Zinc
50 screws in a box.
Part# **AV12095**

PHILLIPS OVAL HD TEKS TAPPING

SCREWS



#8 x 1"
#6 Head

Black
50 screws in a box.
Part# **AV16736**

PHILLIPS FLAT HEAD TAPPING

SCREWS



100 screws in a box.

#8 x 7/16" [#6 Head] Zinc
#8 x 1" Black

Part# **AV1479**
Part# **AV10177**

PHILLIPS FLAT TOP TAPPING

SCREWS



Phillips Flat Top Washer Head Tapping Screws
100 screws in a box.

#8 x 5/8" Black E-Coat
#8 x 3/4" Black E-Coat

Part# **AV12214**
Part# **AV12215**

TOOLS

ALBRIGHT'S AWL



Bamboo Handle & Sheath
8 1/2" Overall Length
Part# **ALBRIGHTAWL**

ALL PURPOSE AWL



with Curved Tip
1 1/4" Hook
4 1/2" Blade
Part# **AV13572**

GLASS RETAINER CLIP INSTALLER



A practical tool for placing trim retainer clips over headed studs welded around the body window-shields and rear window openings.

Part# **AV13574**

TRIM PAD REMOVING TOOL



Designed specifically to pull out the plastic trim pad fasteners used on GM cars.

Part# **AV7999**

ANTIQUE NAIL PLIERS



Provides leverage for pulling out antique nails with minimal effort.

1 3/4" Jaw Width
7" Overall Length

Part# **V601**

TACK HAMMER



Features a magnetic end for setting the tack in place and a striking end for driving tacks home.

5 1/2" Head Length
1/4" Magnetic Face
7/16" Large Face

Part# **V33**

RUBBER Mallet



Features a limited bounce and can be used without the fear of marring the surface.

3 1/4" Head Length
2" Face Diameter

Part# **V61M**

CANVAS, WEBBING, & LEATHER PLIERS



Made with hammer jaw that acts as a lever when a strong pull is required.

Part# **V250**

STRAIGHT EDGE RULER



Aluminum
60" Long
Markings on one side only.

Part# **V60SE**

TOOLS

STAPLE PULLER PLIERS



Features a bent nose that is the perfect angle to fit under a staple, grab it, and pull it out.

7/8" Max. Jaw Opening
6 1/2" Overall Length

Part# **V600**

QUICK NAILER



Lets you set up to 5 nails at one time without damaging the furniture or your fingers

Creates a 1/2" spacing between the nails.

Part# **V777**

EZE FOAM CUTTER



Cuts foam up to 7 1/2" thick.

Removable foot
Lightweight for easy handling
Turns with ease

Part# **CTEZFC**

10" Replacement Blade

Part# **CTEZFCB**

RAZOR BLADES



High Carbon Surgical Steel
100 razors in a pack.
Sold by the pack.

Part# **RAZOR**

WISS BENT SHEARS



Hot drop-forged, polished blades

Finest quality cutlery steel

10"

10" Industrial

10" Industrial [Left Handed]

12"

Part# **V20**

Part# **V20W**

Part# **V20LH**

Part# **V22**

WISS INDUSTRIAL SHEARS



Hot Drop-forged polished carbon steel blades

Nickel Plated Blades and Handle

8 1/2"

Part# **SC8**

FINNY ALPHA SHEARS



Feature "Botec Cut" blades for exact and light cutting and features unbreakable plastic handles with non-slide soft inserts.

10"

Part# **SC73225**

TEGO CHROME SHEARS



Knife Edge
Fully Chrome

10"

Part# **SCT40**

TOOLS

END CUTTING NIPPERS



Can be used for the cutting of snaps.

Part# **V94**

SEAM RIPPER



Used for ripping seams. Cuts auto carpeting, plastic, and rubber.

2 7/8" Blade Length

Part# **V1020**

SPRAY GLUE GUNS

Adjustable tip and air pressure.

Sprays most types of liquids including adhesives, paints, and cleaning fluids.



Part# **CTEZSPRGUN**



Part# **SG1099**

CLAW TOOL



2 5/8" Long Blade

Part# **V12312**

STAPLE LIFTER



This staple lifter is formed at the correct angle for removing staples of any size, from the smallest to the longest leg staples.

4 1/2" Long Blade

Part# **V12012**

TACK & STAPLE REMOVER



This multi-purpose tool can be used for removing tacks and staples as well as grooving out drawers so they stick when re-glued.

2 1/2" Long Blade

Part# **V121**

STAPLE REMOVER



2 1/4" Long Blade

Part# **V124**

PLASTIC TACK CLAW



2 1/2" Long Blade

Part# **V202**

RIPPING CHISEL TOOL



3 5/8" Long Blade

Part# **V402**

TOOLS

COMBINATION TOOL



Combination Ripping
Tool & Tack Puller

3 3/4" Long Blade

Part# **V40212**

MOON HEADLINER TOOL



Used to stuff headlining in
the channel above doors,
or to stuff upholstery and
trim edges into tedious
places.

Part# **AV7672**

HEADLINER TUCKING TOOL



Use this sturdy, tough
tool to tuck headlining
and upholstery around
windows and above
doors and other hard to
reach places .

Part# **V7709**

GOOSENECK WEBBING STRETCHER



Provides extra leverage
when stretching webbing
close to the frame.

Part# **V253**

WEBBING STRETCHER



Creates extra leverage
for tightening webbing
over the furniture frame.

Part# **V255**

JIFFY STEAMERS

J-2 STEAMER

Features a quick one
minute heat up time and a
one gallon impact resistant
water tank.

Over 2 hours of steam per
filling.

Part# **J2**



J-4000 STEAMER

Features a quick two
minute heat up time and a
one gallon self-contained
water tank.

Over 2 hours of steam per
filling.

Part# **J4**



AUTOMOTIVE

CONVERTIBLE TOP MATERIAL

Sold by the yard.



Pinpoint Vinyl Black
54" Wide
Part# **CONVBB1**



Stayfast Cloth Black
60" Wide
Part# **SFF848**

CONVERTIBLE TOP BINDING

VINYL BINDING

1 1/4" Wide | One Edge Turned
100 yards on a roll. | Sold by the roll.



Black Pinpoint
GM White Pinpoint



Part# **CONVBINB**
Part# **CONVBINW**

CLOTH BINDING

1 1/4" Wide | One Edge Turned
Sold by the yard.



Black Stayfast
Black Acrylic Canvas



Part# **RBIND**
Part# **BINBLACK**

CONVERTIBLE TACK STRIP

Sold by the yard.



Front Style
5/8" x 1/8"
Part# **TACF**



Rear Style
1/2" x 3/8"
Part# **TACR**

CONVERTIBLE TOP WIRE ON



Used to finish off the stapled
area above the plastic
window.

Sold by the yard.



Black Pinpoint Vinyl
Black Sailcloth Vinyl
GM White Pinpoint Vinyl
Black Stayfast Cloth

Part# **CONVWIRB**
Part# **CONVWIRBSC**
Part# **CONVWIRW**
Part# **SFF848WO**



Wire On Tips
Stainless Steel
Sold by the each.

Part# **AV7185**

CONVERTIBLE TOP WEBBING

Sold by the yard.



4" Wide Part# **CONVWEB4**
6" Wide Part# **CONVWEB6**
9" Wide Part# **CONVWEB9**

AUTOMOTIVE

LANDAU TOP MATERIAL

49" Wide | Sold by the yard.

**Vinyl Top Material*



Elk Grain Black	Part# S-848
Elk Grain Bright White	Part# S-9753
Elk Grain Buckskin	Part# S-828
Elk Grain Dark Royal Blue	Part# S-7693
Elk Grain Gunmetal Metallic	Part# S-7782
Elk Grain Silver Metallic	Part# S-7781

TONNEAU COVER



Elk Grain Tonneau Vinyl
Black
78" Wide

Sold by the yard.
Part# **S1402**

TONNEAU WELT



0.350" Bead Diameter
0.925" Overall Size
Sold by the yard.

Black Part# **TC600**
White Part# **TC600W**

CLEAR VINYL



Use for protecting upholstery from spills or as windows and curtains in boats and convertible tops.

Sold by the yard.

16 Gauge [25 yard rolls]	Part# P16GA
20 Gauge [20 yard rolls]	Part# P20GA
30 Gauge [25 yard rolls]	Part# P30GA
40 Gauge [20 yard rolls]	Part# P40GA

Visit www.albrightsupply.com for more products, information, tools, pricing, and real-time inventory!

JUTE PAD



Jute Pad provides insulation underneath automotive carpeting.

Sold by the yard.

20oz Part# **JUTE**
40oz Part# **JUTE40**



Aluminum Backed Jute Pad provides insulation underneath carpet or under headliners.

Sold by the yard.

48oz Part# **JUTEAL**

OET BIAS BINDING



1 1/4" wide, one edge turned vinyl bias binding is flexible and durable providing a clean finish on the edges of automotive carpets and floor mats among other uses.

100 yards on a roll.
Sold by the roll.

Almond | Black | Camel | Charcoal | Dark Blue
Dark Brown | Dark Gray | Firethorne | Green
Maroon | Off White | Oxblood | Red
Royal Blue | Saddle | Slate Blue | White | Willow

HEEL PADS



Heel Pads help to protect the carpet from wear and tear where the heel rests while driving.

Small Heel Pads are 13" x 6 1/4"
Medium Heel Pads are 17 1/2" x 9 1/4"

Black | Burgundy | Caramel | Charcoal | Dark Blue
Dark Red | Gunmetal | Light Blue | Maroon
Medium Blue | OD Green | Saddle | Turquoise

AUTOMOTIVE

EL DORADO CUTPILE CARPET

Made in the USA, El Dorado Cutpile automotive carpet is the superior choice for restoration products. El Dorado is available in 80" Unlatexed and 80" & 40" Latexed varieties. It is made of 100% nylon fibers.



Biscuit

80" Unlatexed **C8510**
80" Latexed **C8510R80**
40" Latexed **CR8510**



Black

80" Unlatexed **C8010**
80" Latexed **C8010R80**
40" Latexed **CR8010**



Carmel

80" Unlatexed **C8540**
80" Latexed **C8540R80**
40" Latexed **CR8540**



Charcoal

80" Unlatexed **C8970**
40" Latexed **CR8970**



Dark Brown

80" Unlatexed **C8100**
40" Latexed **CR8100**



Dark Graphite

80" Latexed **C8945R80**



Lapis

80" Unlatexed **C8170**
80" Latexed **C8170R80**



Maroon

80" Unlatexed **C8250**
80" Latexed **C82500R80**
40" Latexed **CR8250**



Medium Beige

80" Unlatexed **C8835**



Medium Dark Grey

80" Unlatexed **C8680**
80" Latexed **C8680R80**
40" Latexed **CR8680**



Medium Grey

80" Unlatexed **C8075**
40" Latexed **CR8075**



Medium Mocha

80" Unlatexed **C8655**



Medium Neutral

80" Unlatexed **C8335**
80" Latexed **C8335R80**
40" Latexed **CR8335**



Medium Opal

80" Unlatexed **C8019**
80" Latexed **C8019R80**



Medium Quartz

80" Unlatexed **C8078**



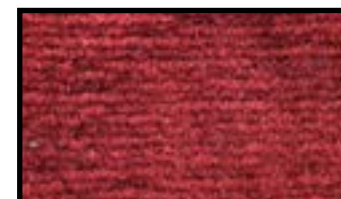
Navy

80" Unlatexed **C8400**
40" Latexed **CR8400**



Prairie Tan

80" Latexed **C8760R80**



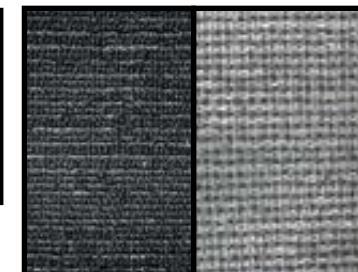
Red

80" Unlatexed **C8150**
80" Latexed **C8150R80**
40" Latexed **CR8150**



Silver

80" Unlatexed **C8530**
80" Latexed **C8530R80**



Latex
Backing

Unlatexed
Backing

AUTOMOTIVE

DETROIT LOOP CARPET

Made in the USA, 600 Series Loop automotive carpet is the superior choice for restoration products, especially in vehicles made prior to 1973. Our loop carpet is 40" wide and features a latex backing.



Black
Part# **C601**



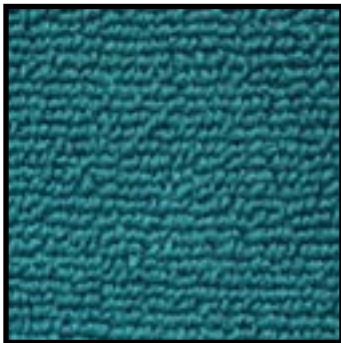
Blue
Part# **C602**



Brown
Part# **C610**



Dark Red
Part# **C615**



Light Blue
Part# **C622**



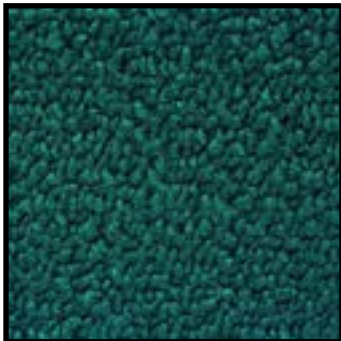
Maroon
Part# **C625**



Olive Green
Part# **C609**



Saddle
Part# **C621**



Turquoise
Part# **C608**



Latex Backing

NIBBED BACK RUBBER MAT



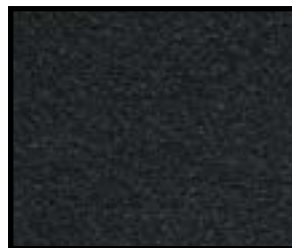
Use our nibbed rubber backing on the back of carpet to create floor mats that stay in place.

36" Wide
Sold by the yard.

Part# **RUBMATNIB**

TRUNK LINING

Trunk Liner is a thin, flexible carpet that is made for lining the inside of trunks. It is also suitable for covering speaker boxes. It is 54" wide.



Black
Part# **TL995**



Charcoal
Part# **TLCH**



Dark Grey
Part# **TLDG**



Light Grey
Part# **TL188**

AUTOMOTIVE

NON-WOVEN STRETCH CARPET

Flexform [12oz] and Superflex [18oz] are non-woven, needle punched stretch carpets. They are 80" wide and unbacked. This carpet is specially made to easily stretch over humps and curves in the floor of your vehicle. It can also be used on door panels, seat backs, speaker boxes, and as trunk lining.



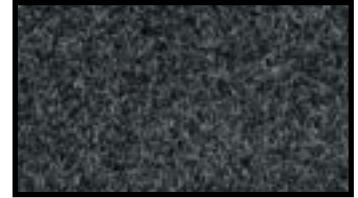
Biscuit
FlexForm **FF1655**
SuperFlex **SF2055**



Black
FlexForm **FF1601**
SuperFlex **SF2001**



Dark Blue
FlexForm **FF1640**
SuperFlex **SF2040**



Dark Gray
FlexForm **FF1607**
SuperFlex **SF2007**



Garnet
FlexForm **FF1660**



Graphite
FlexForm **FF1670**
SuperFlex **SF2070**



Maroon
FlexForm **FF1625**
SuperFlex **SF2025**



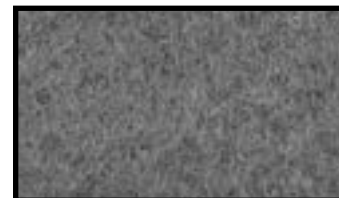
Medium Blue
FlexForm **FF1619**
SuperFlex **SF2019**



Medium Camel
FlexForm **FF1680**
SuperFlex **SF2080**



Medium Dark Pewter
FlexForm **FF1677**
SuperFlex **SF2077**



Medium Graphite
SuperFlex **SF2013**



Medium Gray
FlexForm **FF1668**
SuperFlex **SF2068**



Medium Neutral
FlexForm **FF1615**
SuperFlex **SF2015**



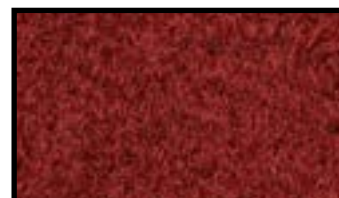
Medium Opal
FlexForm **FF1675**
SuperFlex **SF2075**



Medium Prairie Tan
FlexForm **FF1612**
SuperFlex **SF2012**



Medium Saddle
FlexForm **FF1620**
SuperFlex **SF2020**



Red
FlexForm **FF1605**
SuperFlex **SF2005**



Silver
FlexForm **FF1651**
SuperFlex **SF2051**

AUTOMOTIVE

LIBERTY "WEH" HEADLINER



STANDARD

58" Wide | 3/16" Foam Backing
Over 40 standard colors and 30 knit colors.
Sold by the yard.



FLAT KNIT

EXTRA WIDE HEADLINER

The Liberty Headliner collection now features 6 extra wide options, three in standard and three in flat knit. 67" Wide | Sold by the yard.

STANDARD

Black Part# **WEH1559XXW**
Sand Gray Part# **WEH1784XXW**
Shale Part# **WEH2144XXW**

FLAT KNIT

Black Ink Part# **WEH2300XXW**
Clear Gray Part# **WEH2340XXW**
Light Cashmere Part# **WEH2363XXW**

GM TAFFETA HEADLINER

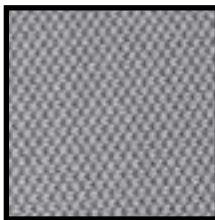
58" Wide | 3/16" Foam Backing



Light Titanium
Part# **WEH2503**



Shale
Part# **WEH3008**



Light Ash Gray
Part# **WEH3009**

SUEDE HEADLINER



Synergy II Suede
60" Wide
1/8" Foam Backing
25 colors available.

Sold by the yard.

VINYL HEADLINER

54" Wide | No Foam Backing
Made for sew-in applications or bow-type headliners.
Sold by the yard.



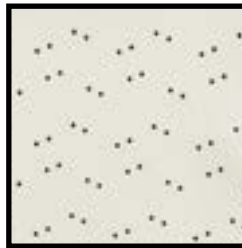
CRATER

Black
White

Part# **VHL754**
Part# **VHL741**

PALOMAR PERFORATED

Black Part# **VHL1102**
White Part# **VHL1100**



PREMIER PERFORATED

Black
White

Part# **VHL1179**
Part# **VHL1354**



TIER

Black
White

Part# **VHL770**
Part# **VHL1513**



VW PLAIN

Off White

Part# **VHL1300**



VW PERFORATED

Off White Part# **VHL1301**



CAMO HEADLINER



RealTree AP HD
60" Wide
1/8" Foam Backing
Sold by the yard.
Part# **CAMOPHRT**

AUTOMOTIVE

VELOUR CLOTHS



Bedford | Chino
Encompass | Envoke | Expo
Intrepid | Jupiter | Madera
Neptune | Reseda | Saturn
Sonoma | Venus
Winchester

HARD FINISH CLOTHS



Calgary | Celdura | Deville
Disco | Dually | Force
Grit | High Rise
Houndstooth | Impala
Nova | Prophecy | Quad
Sync | Techno | Tenacity
Trophee Plaid | Uber | Vigor
Xcel

SYNERGY II SUEDE



SYNERGY II SUEDE CONTOUR
60" Wide
Unbacked

Perfect for dashes and door panels.



SYNERGY II SUEDE PERFORMER
58" Wide
Backed

Perfect for seating.



SYNERGY II SUEDE LAZOR
54" Wide
Faux-perforated
[Holes do not go all the way through]

Perfect for seating.

SPEAKER CLOTH



Grille Tex
68" Wide

Black

Part# **GTBLA**

NEO SUPREME



58" Wide
1/4" Thick
Water Repellent

Available in 9 colors.

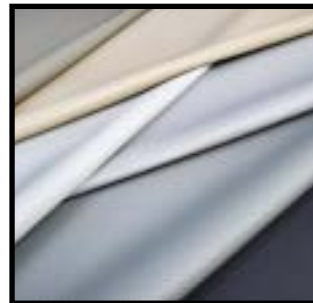
TWEED



54" Wide
Suitable for automotive use.
Also perfect for church pews and seating.

555 Tweed | Duramax

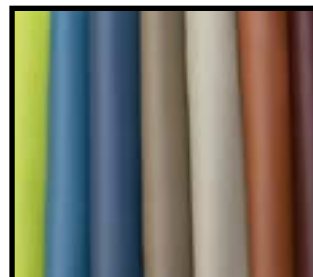
MAHALO & KONA COLLECTION



Kona is an automotive vinyl that features a small hexagon pattern that pairs perfectly with the smooth leather-like Mahalo vinyl. They are available in six beautiful neutral colors. Suitable for automotive and general purpose applications.

54" Wide
18-19 ounces

EZ VINYL COLLECTION



EZ vinyl provides a budget-friendly option for automotive and hospitality uses. It is available in over 30 colors.

54" Wide
25 ounces

Corinthian | Elk | Heidi | Madrid | Monticello
Oxen | Sierra | Wallaby

AUTOMOTIVE

DENALI AUTOMOTIVE VINYL

Denali is a budget friend vinyl with a wide assortment of colors to help you complete your job without breaking the bank.

54" Wide | 29 ounces
Available in 57 colors.



Black	Part# COV1
Black Bristol	Part# COV51
Black Corinthian	Part# COV56
Black Croc	Part# COV47
Black Dynasty	Part# COV50
Black Heidi	Part# COV53
Black Longitude	Part# COV57
Black Madrid	Part# COV52
Black Milled Pebble	Part# COV54
Black Ostrich	Part# COV46
Black Pantera	Part# COV34
Black Perforated	Part# COV33
Black Stitched	Part# COV49
Black Wallaby	Part# COV55
Brown	Part# COV14
Burgundy	Part# COV16
Clear Gray	Part# COV5
Dark Brown	Part# COV15
Dark Brown Ostrich	Part# COV48
Dark Chocolate	Part# COV43
Dark Gray	Part# COV7
Dark Green	Part# COV20
Ebony [AL7391]	Part# COV32
Eggplant	Part# COV42
Evergreen	Part# COV45
Graphite [AL6892]	Part# COV31
Gray [AL6890]	Part# COV29
Green	Part# COV19
Light Graphite [AL7119]	Part# COV27

Light Gray	Part# COV4
Light Neutral	Part# COV21
Light Parchment [AL7220]	Part# COV23
Lime Green	Part# COV38
Magenta	Part# COV41
Medium Beige [AL6891]	Part# COV25
Med Dark Pewter [AL7179]	Part# COV30
Medium Graphite [AL7114]	Part# COV28
Medium Gray	Part# COV6
Medium Neutral [AL7043]	Part# COV26
Medium Parchment	Part# COV35
Med Prairie Tan [AL7167]	Part# COV24
Midnight Black [AL7170]	Part# COV22
Navy	Part# COV11
Off White	Part# COV3
Orange	Part# COV40
Pacific Blue	Part# COV9
Pewter	Part# COV8
Pink	Part# COV37
Purple	Part# COV39
Red	Part# COV18
Rust	Part# COV12
Saddle	Part# COV13
Sienna	Part# COV44
Teal Blue	Part# COV10
White	Part# COV2
Wine	Part# COV17
Yellow	Part# COV36

MORBERN PREMIUM COLLECTION



The Morbern Premium Collection is an extensive automotive vinyl collection that features 13 classic grains in over 70 colors.

54" wide except where noted

Corinthian | G-Grain | Heidi [61" Wide] | Longitude
Madrid | Milled Pebble | Monticello | Oxen
Rawhide | Sierra | Soho | Verona | Wallaby

SOFT IMPACT COLLECTION



The Soft Impact Collection features 9 classic automotive grains with 10 perforated variations.

54" Wide
30 ounces

Caprice | Corinthian | G-Grain | Longitude
Milled Pebble | Monticello | Valencia | Verona
Wallaby

AUTOMOTIVE & MARINE

SOFTSIDE COLLECTION

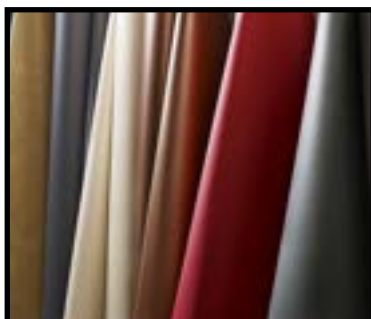


The Softside Automotive collection features high-performance vinyl with proven quality, comfort, and durability combined with a large selection of colors and styles.

54" Wide
28-29 ounces

Apex | Aries | Buckskin w/ Aberdeen Perf
Caprice | Carbon Fiber | Corinthian | G-Grain
Gemini | Grand Prix | Heidi | Longitude | Madrid
Montana | Monticello | Nuance | Orion | Oxen
Pegasus | Polaris | Ruffino | Sierra | Soho | Sutton
Verona | Wallaby

ENDURASOFT CORE COLLECTION



Designed for automotive and general upholstery uses, the Endurasoft Core collection features timeless grains and exciting new patterns

54" wide except where noted
32-33 ounces

Brushed Aluminum | Carbon Fiber | Chainmaille
Corinthian | Doeskin | G-Grain | Hampton Plain
Hampton Perforated | Heidi [61" Wide] | Honda
Longitude | Madrid | Mercedes | Milled Pebble
Montana | Monticello | Oxen | Phantom | Sierra
Soho | Vaquero | Verona | Wallaby

ALLANTE COLLECTION



The Allante Collection features a soft leather-like feel and is suitable for automotive and hospitality uses. Prodigy is also suitable for marine use.

54" Wide
29-30 ounces

Allante | Carrara | Prodigy

RECACRIL ACRYLIC CANVAS



Recacril is a high performance, fade resistant canvas that is easy to cut, sew, and handle. It is suitable for awnings, boat covers, and similar sun protection products.

60" Wide | 9 ounces
Available in 37 colors.

RECWATER PVC-BACKED CANVAS



RecWater features a PVC coating on the back, creating a waterproof product. It is perfect for boats and awnings in more extreme weather conditions.

60" Wide | 20 ounces
Available in 13 colors.

RECACRIL DECORLINE CANVAS



Recacril DecorLine provides the same high performance as standard Recacril in a lighter weight to make it easier to handle when creating patio furniture, outdoor cushions, umbrellas, and more.

60" Wide | 8 ounces
Available in 20 colors.

TOP GUN COATED CANVAS



Top Gun is an acrylic coated polyester material suitable for marine tops, trailer covers, canopies, tarps, and more.

62" Wide
11.5 ounces

Available in 20 colors.

MARINE

CANVAS BINDING



3/4" OR 7/8"
DOUBLE FOLDED



1"
DOUBLE FOLDED



1 1/4"
SINGLE FOLDED

These lasting products can be used in a wide range of indoor and outdoor upholstery projects to provide a clean, professional look to your project.

Available in assorted colors.
100 yards on a roll. | Sold by the yard.

TOP VALUE VINYL COATED POLYESTER



Durable and versatile, Top Value is ideal for many industrial applications such as truck tarps, curtains, and oil booms.

61" Wide
21 colors available in 18oz.
1 color available in 40oz.

BRUN TUFF VINYL COATED POLYESTER



Ideal for general purpose covers, curtains, tents, and more.

10oz is 54" or 62" wide.
Available in 8 colors.

14oz is 62" wide.
Available in 8 colors.

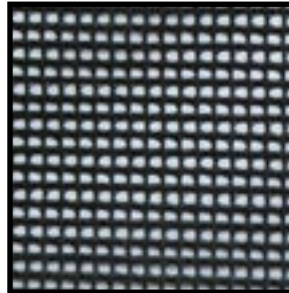
18oz is 62" wide.
Available in 10 colors.

**14oz features a leather embossed grain.*

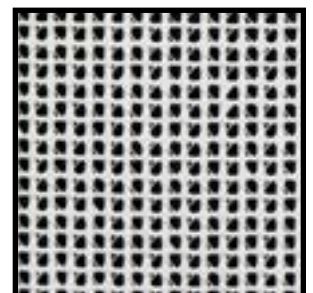
VINYL COATED MESH

Used for water drainage and air circulation underneath boat cushions or for truck covers, outdoor furniture, and more.

62" Wide | 6.5 ounces
Sold by the yard.



Black
Part# **VCMBLACK**



White
Part# **VCMWWHITE**

BOAT SEAT UNDERLINING

Used for water drainage and air circulation underneath boat cushions.

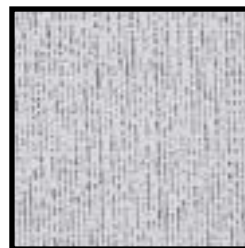
54" Wide | 11 ounces
PVC Coated Polyester
Sold by the yard.



Black
Part# **BOATMB**



Bright White
Part# **BOATMBWHITE**



Grey
Part# **BOATMGREY**



White (Cream)
Part# **BOATMW**

Visit www.albrightsupply.com for more products, information, tools, pricing, and real-time inventory!

Follow us on Facebook, Instagram, and Twitter.

MARINE

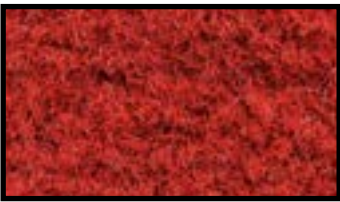
AQUA TURF MARINE CARPET

Aqua Turf Marine carpet is soft and durable, standing up to outdoor conditions. It is mildew and UV resistant and easy to clean. Aqua Turf is suitable for glue-down installation only. 14 ounces.



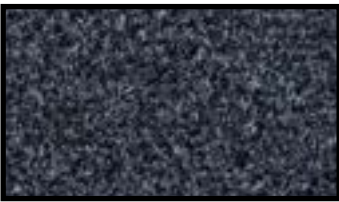
Black

8' 6" Wide **AQ5825A**



Cardinal

6' Wide **AQU5828**



Charcoal

8' 6" Wide **AQ5827A**



Cocoa

8' 6" Wide **AQ5838A**



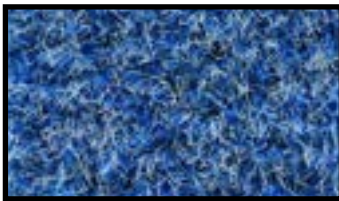
Driftwood

8' 6" Wide **AQ5804A**



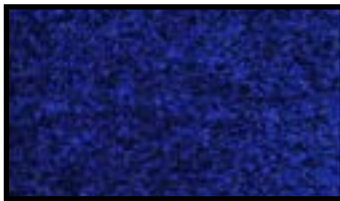
Forest

8' 6" Wide **AQ5870A**



Gulf Blue

8' 6" Wide **AQ5816A**



Indigo

8' 6" Wide **AQ5819A**



Light Beige

8' 6" Wide **AQ5817A**



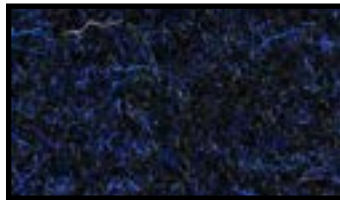
Marble Grey

8' 6" Wide **AQ5810A**



Metallic Grey

8' 6" Wide **AQ5850A**
6' Wide **AQU5850**



Navy

8' 6" Wide **AQ5831A**



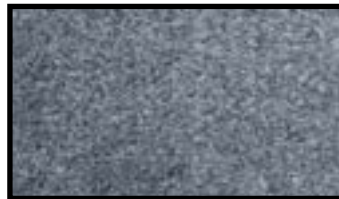
Royal Blue

8' 6" Wide **AQ5801A**



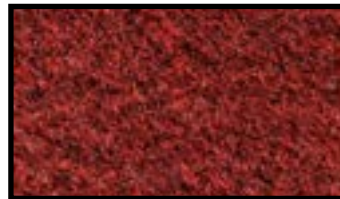
Sand

8' 6" Wide **AQ5814A**



Smoke

8' 6" Wide **AQ5845A**



Sunset

8' 6" Wide **AQ5818A**



Teal

8' 6" Wide **AQ5862A**



Backing

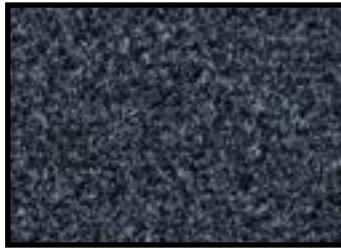
MARINE

CATALINA MARINE CARPET

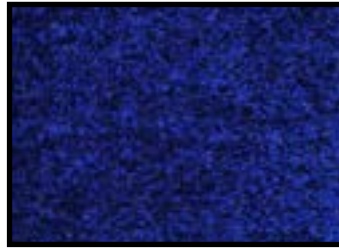
Similar to Aqua Turf, Catalina is soft but durable and stands up well to outdoor conditions. However, Catalina features a ribbed backing that allows for snap-in installations. 6' Wide | 18 ounces



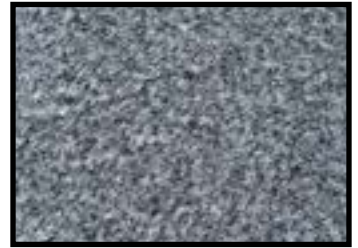
Black
Part# **CAT5325**



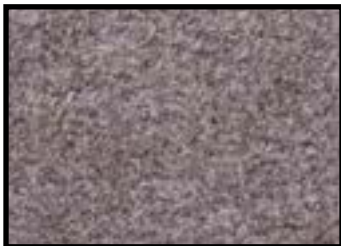
Charcoal
Part# **CAT5327**



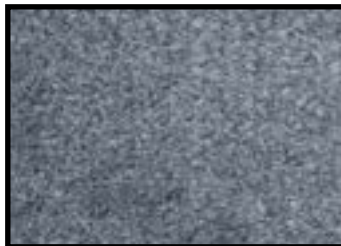
Indigo
Part# **CAT5310**



Marble Grey
Part# **CAT5310**



Sand
Part# **CAT5314**



Smoke
Part# **CAT5345**



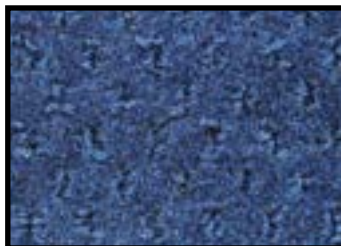
Backing

MYSTIC MARINE CARPET

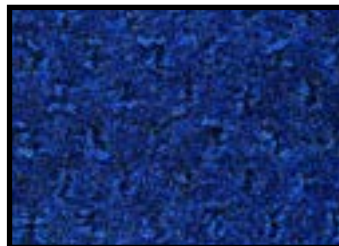
Mystic marine carpet utilizes a unique cut 'n loop construction that will stand up to the elements and maintain the original surface appearance much longer than conventional carpets. Mystic is suitable for glue-down installation only.
8' Wide | 20 ounces | Available in 5 colors.



Charcoal
Part# **MYS6227**



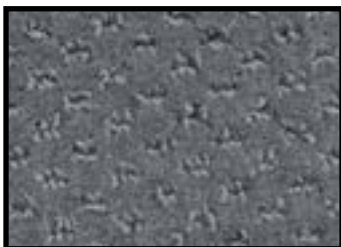
Ocean Blue
Part# **MYS6225**



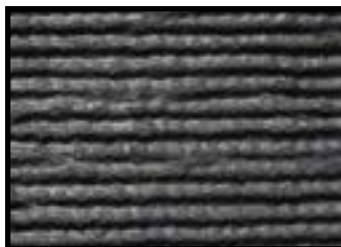
Royal
Part# **MYS6219**



Sandstone
Part# **MYS6205**



Smoke
Part# **MYS6245**

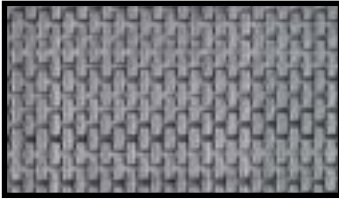


Backing

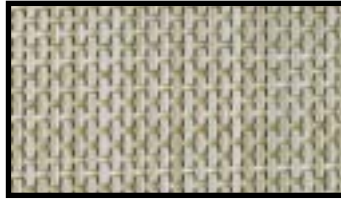
MARINE

HYDROMAT MARINE VINYL FLOORING

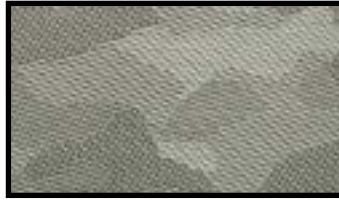
HydroMat is a high performance woven marine vinyl flooring with unsurpassed durability and long wearing performance qualities. HydroMat brings style and sophistication to any indoor or outdoor application. 8'6" Wide



Basket Weave Granite
Part# **HM204-B007**



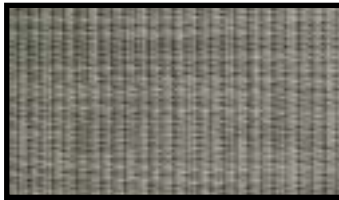
Basket Weave Latte
Part# **HM204-B005**



Camo
Part# **HM204-C010**



Elegante Caramel
Part# **HM204-E054**



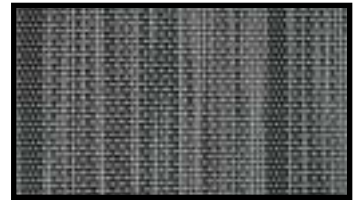
Elegante Earth
Part# **HM204-E065**



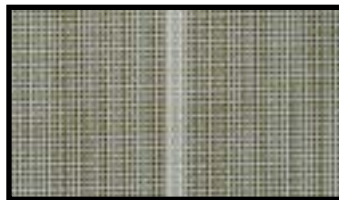
Elegante Sisal
Part# **HM204-E058**



Premier Buff
Part# **HM204-P075**



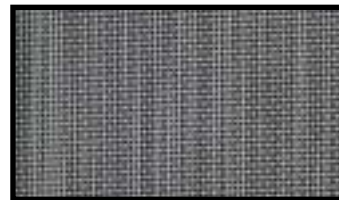
Premier Stone
Part# **HM204-P077**



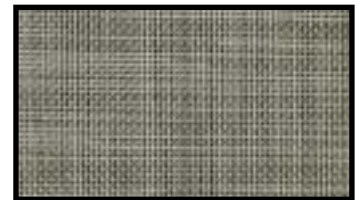
Premier Teak Buff
Part# **HM204-P073**



Premier Tusk
Part# **HM204-P078**



Premier Vapor
Part# **HM204-P076**



Seaweave Cord
Part# **HM204-S084**



Backing

HYDROWEAVE MARINE VINYL FLOORING

HydroWeave Marine Vinyl Flooring from Dorsett is an innovative, durable, and beautiful alternative to carpet. This product is perfect for boats, patios and decks, garage floors, and more.

8'6" Wide



Bamboo
Part# **HWA065**



Gravel Grey
Part# **HWA012**



Java Brown
Part# **HWA016**



Natural Beige
Part# **HWA055**



Mocha Brown
Part# **HWA014**



Backing

MARINE

CAPRIE MARINE VINYL FLOORING

Caprie Marine Vinyl Flooring is an affordable, beautiful alternative to marine carpet. It is easy to clean and maintain and provides the perfect finish to any boat or RV interior. It is 74" Wide.



Grey Mist

Part# **CAPRIE60295**



Silver Grey

Part# **CAPRIE60290**



Backing

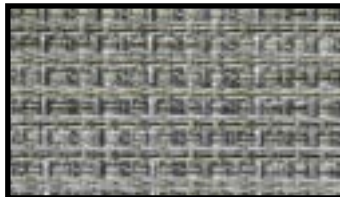
COMPASS MARINE VINYL FLOORING

Made from PVC and Polypropylene yarns to create a long lasting boat flooring solution that won't crush or matte over time like traditional carpeting. The foam and felt backing provides added cushion. The flooring is easy to clean and does not absorb water. It is 8'6" Wide.



Luna Gunmetal

Part# **COM-60305**



Luna Metro

Part# **COM-60307**



Luna Tannery

Part# **COM-60304**



Solar Tan

Part# **COM-60406**



Backing

BOAT TRAILER RUNNER

For use on boat trailers. Made with Aqua Turf Marine Carpet. 12" Wide | Sold by the yard.



Black

Part# **BR5825**



Charcoal

Part# **BR5827**

BERBER MARINE CARPET

Berber adds a luxurious, clean look to your boat design and features a rubber backing that makes it suitable for snap in installation. 6' Wide | 29 ounces Available in 2 colors.



Charcoal

Part# **BER5510**



Oatmeal

Part# **BER5509**



Backing

Visit www.albrightssupply.com for more products, information, tools, pricing, and real-time inventory!

Follow us on Facebook, Instagram, and Twitter.

MARINE

STAY COOL VINYL



These marine quality vinyls are made to stay cooler to the touch than standard coated vinyls even in the direct sun. No more hot seats while you're enjoying a day at the lake!

54" Wide | 29-30 ounces

Breeze PermaCool | Fresco CoolTouch
Sonar ChromaCool

NOTE: Fresco has special cleaning instructions that must be followed. Failure to follow the care and cleaning instructions will damage the vinyl and void the warranty.

SOFTSIDE MARINE COLLECTION

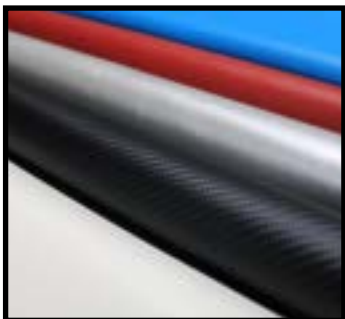


Softside collection has proven to be a quality, high-performance choice for upholstery professionals for years. It includes an extensive library of marine-grade coated fabrics.

54" Wide | 29-30 ounces

Allegro | Anchor | Apex | Aries | Beluga
Carbon Fiber | Diamante | Gemini | Heidi
Islander | Leon | Marlin | Navigator | Orion
Pegasus | Polaris | Rattan | Reflex MQ
Seabreeze | Simtex | Trexx MQ | Zander

SHIP 2 SHORE MARINE COLLECTION

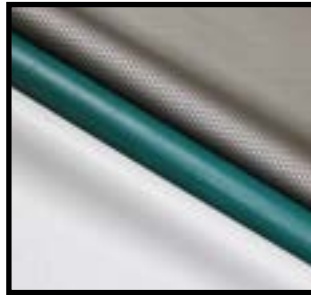


The Ship 2 Shore collection from Enduratex features a beautiful line of marine vinyls including metallics, carbon fiber, and a faux-diamond pattern.

54" Wide
30-32 ounces except where noted.

Armada | Brushed Aluminum | Carbon Fiber
Counterpane | Jetstream | Lighthouse [26oz]
Lunar | Tradewinds | Windsong

MORBERN MARINE COLLECTION



Features 14 patterns that work beautifully together to form a unique and durable design to your boat seats.

54" Wide
31-32 ounces except where noted.

AllSport [36oz] | Biscayne | Catalina | Edge
Freeport | Monterey | Newport | Prodigy
Protégé | Rush | Sanibel | Seabrook | Shock
Wave | Yorktown

SEASCAPE MARINE COLLECTION



Seascape is a budget friendly marine vinyl that features over 40 colors plus matching welt, hidem, quilted vinyl, and laminated vinyl. This collection also features 6 colors of a faux tufted vinyl and carbon fiber.

54" Wide | 33 ounces

JETTY MARINE VINYL



Jetty marine vinyl is a much-needed, sustainable option for the marine industry that provides protection from pink-staining thanks to the lack of plasticizers. This vinyl is inherently anti-bacterial, doesn't crack or peel, and can withstand long exposure in the outdoors.

54" Wide | 28 ounces
Available in 7 colors.

GENESIS MARINE VINYL



Genesis Marine is a budget-friendly marine vinyl from Enduratex.

54" Wide | 28 ounces
Available in 19 colors.

SPECIALTY

BAYSIDE MARINE VINYL



Bayside marine vinyl from Morbern features their Splash 4-Way Stretch backing for enhanced tailorability, making it easy to form around curves and awkward shapes. It's perfect for Jet Skis and similar products, marine applications, and hospitality furniture.

54" Wide | 33 ounces
Available in 28 colors.

CAMOUFLAGE VINYL

Suitable for marine and automotive use.
54" Wide | 33 ounces



Mossy Oak
Break Up



Mossy Oak
Break Up Infinity



Hidden Creek
Hardwoods



Hidden Creek
Marsh

EXOTIC VINYL



These exotics feature a high abrasion resistance creating a durable vinyl suitable for automotive and residential uses.

54" Wide
29 ounces.

Denali Black Croc
Denali Black Ostrich
Denali Dark Brown Ostrich

Part# **COV47**
Part# **COV46**
Part# **COV48**

RAPPER XTREME SEATING



The Rapper Xtreme Seating collection features 8 standard vinyls, the Extreme 4-Way Stretch, and a SlipStop variety perfect for ATVs and Jet Ski seats.

54" Wide | 28-30 ounces
Available in 10 varieties.

ALLSPORT 4-WAY STRETCH VINYL



All Sport provides ultimate flexibility for all your upholstery needs. Allsport is ideal for ATVs, Motorcycles, Jet Skis, Tractor Seats, and other similar applications.

54" Wide | 36 ounces
Available in 11 colors.

GENESIS ECONOMY VINYL



Genesis Economy is a budget friendly vinyl collection suited for general upholstery uses.

54" Wide | 26 ounces
Available in 23 colors.

Corinthian Ebony
G-Grain Black Ink
G-Grain Med Prairie Tan
Gray
Graystone
Light Cashmere
Light Parchment
Light Titanium
Madrid Black
Madrid White
Medium Dark Pewter
Medium Flint
Medium Light Stone
Medium Neutral
Milled Pebble Ebony
Oxen Black
Shale
Sierra Black
Sierra White
Steel Gray
Very Dark Pewter
Wallaby Black
Wallaby White

Part# **GNA3303**
Part# **GNA3318**
Part# **GNA3330**
Part# **GNA3351**
Part# **GNA3357**
Part# **GNA3345**
Part# **GNA3336**
Part# **GNA3360**
Part# **GNA3306**
Part# **GNA3327**
Part# **GNA3363**
Part# **GNA3366**
Part# **GNA3341**
Part# **GNA3333**
Part# **GNA3315**
Part# **GNA3312**
Part# **GNA3339**
Part# **GNA3300**
Part# **GNA3324**
Part# **GNA3354**
Part# **GNA3369**
Part# **GNA3309**
Part# **GNA3321**

CONTRACT

ENDURATEX CONTRACT VINYL



Featuring over 30 patterns from Enduralex, these vinyls are suitable for healthcare, hospitality seating, and other similar jobs.

54" Wide
28-37 ounces except where noted.

Abocado [21oz] | Alchemy | Andante
Aspirations [26oz] | Berwick Tweed [25oz]
British Sterling | Cava [18oz] | Coastal Ranch
Crafted Grids | Crianza | Eel | Essentials
Grammercy | Gran Reserva | Grand Vista
Independence 3 | Natural Movements | Orient
Ossie | Overshadow | Palm Harbor | Predictions
Prizm | Rancio | Roble | Sonoma | Spindles
Steps | Stingray | Surrey | Synchronicity
Tombstone | Vaquero | Virtue | Visions [26oz]
Woven Hues | Zealand

SPRADLING CONTRACT VINYL



Featuring over 20 patterns from Spradling, these vinyls are suitable for healthcare, hospitality seating, and other similar jobs. All vinyls with "Neo" in the name are Prop 65 compliant.

54" Wide
27-34 ounces except where noted.

**Caliber and Dolce are Polyurethane, not vinyl.*

Ballistic [21oz] | Chambray Neo | Dolce [15oz]
Edgeline | Guardian | Hitch Neo | Interlace Neo
Invision Neo | Kaleidoscope Neo
Kilkenny Tweed Neo | Maglia | Milano Stitch
Modena [26oz] | Patriot Plus Neo | Reflex Neo
Renaissance Neo | Scribe Neo | Sequins Neo
Silververtex Neo | Stratosphere Neo | Whisper Neo

NAUGAHYDE CONTRACT VINYL



Featuring 11 patterns from Naugahyde, these vinyls are suitable for healthcare, hospitality seating, gym equipment and other similar jobs.

54" Wide
28-37 ounces

All American | English Pub | Rogue II
Spirit Millennium | Zodiac

**Special order. Whole rolls only.*

COMFORT SUEDE CONTRACT



Comfort Suede features a beautiful color line of furniture grade suede.

57" Wide
Available in 20 colors.

Apple Green	Part# 210560
Camel	Part# 210505
Cappuccino	Part# 210506
Caribbean	Part# 210555
Cocoa	Part# 210551
Fawn	Part# 210511
Flame	Part# 210512
Flannel	Part# 210550
Graphite	Part# 210536
Lapis	Part# 210514
Lava	Part# 210553
Onyx	Part# 210517
Oyster	Part# 210529
Palm	Part# 210559
Parrot	Part# 210561
Sand	Part# 210523
Stone	Part# 210525
Sunglow	Part# 210546
Tangelo	Part# 210548
Wineberry	Part# 210554

LEATHER

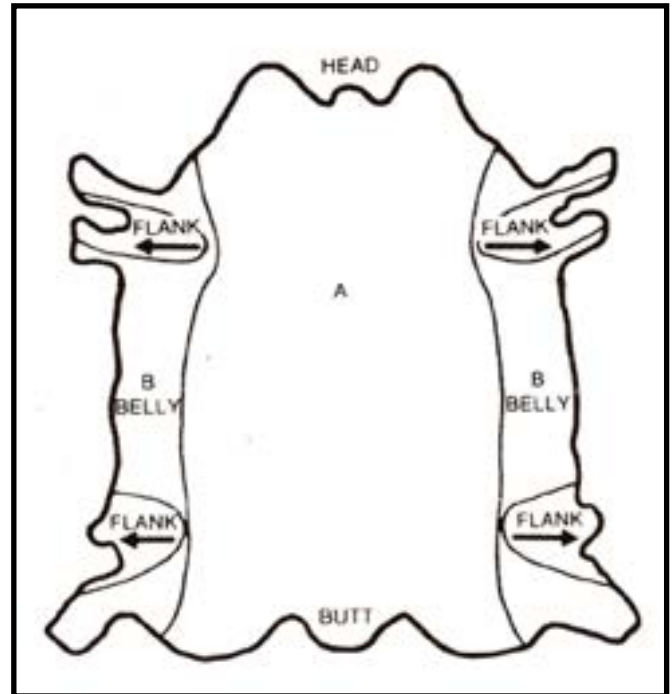
- Leather is sold by the square inch for cut pieces.
- Half Hides and Whole Hides are sold by the square foot.
- Whole hides are on average 45-55 square feet.

**Special Order Only*

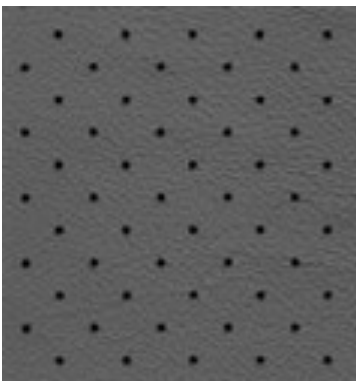
Square Feet to Yards (54" Wide)

17 square feet = 1 yard
34 square feet = 2 yards
51 square feet = 3 yards

We can also send leather and vinyl off to be perforated. Contact us for details.

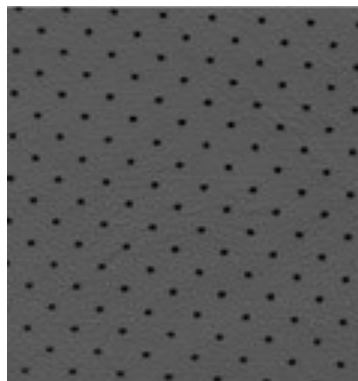


The following perforation styles are available:



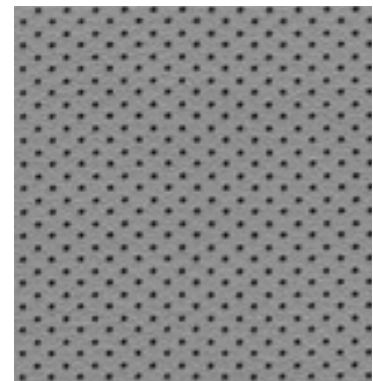
GM Standard

Hole Distance: 9.6mm x 4.8mm
Pin Size: 1.3mm
Hole Size: 1.1mm (+/- 0.2mm)



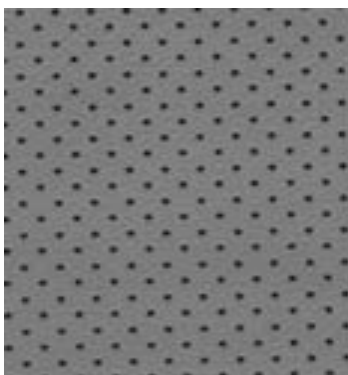
Ford Standard / GM Small

Hole Distance: 7mm x 3.5mm
Pin Size: 1.3mm
Hole Size: 1.1mm (+/- 0.2mm)



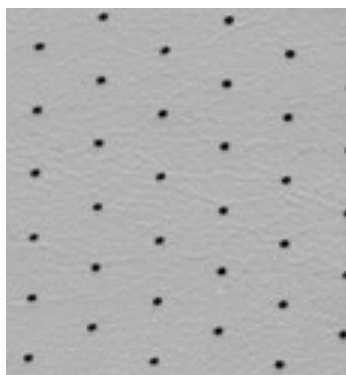
Ford Micro / GM Mini

Hole Distance: 5mm x 2.5mm
Pin Size: 1.3mm
Hole Size: 1.1mm (+/- 0.2mm)



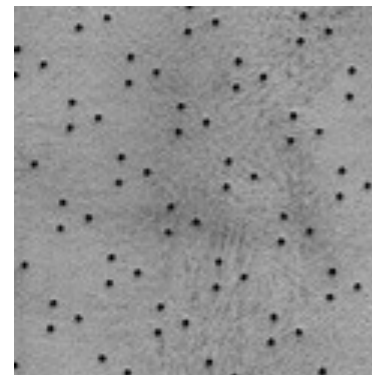
Ford Mini / Chrysler Axis II

Hole Distance: 3.6mm x 1.8mm
Pin Size: 1.1mm
Hole Size: 0.9mm (+/- 0.2mm)



Euro

Hole Distance: 16mm x 4.61mm
Pin Size: 1.4mm
Hole Size: 1.2mm (+/- 0.2mm)



Chrysler Tri Star

Hole Distance: 13.75mm x 6.5mm
Pin Size: 1.1mm
Hole Size: 0.9mm (+/- 0.2mm)

Albright's Supply

HOME OF
FREE SHIPPING

2102 South Tate Street
Corinth, Mississippi 38834

(662) 287.1451 [Office]
(662) 287.1452 [Fax]
(662) 872.9334 [Text Only]

www.albrightssupply.com

HOURS OF OPERATION

Monday - Friday | 8:00 AM - 5:00 PM (CST)

